

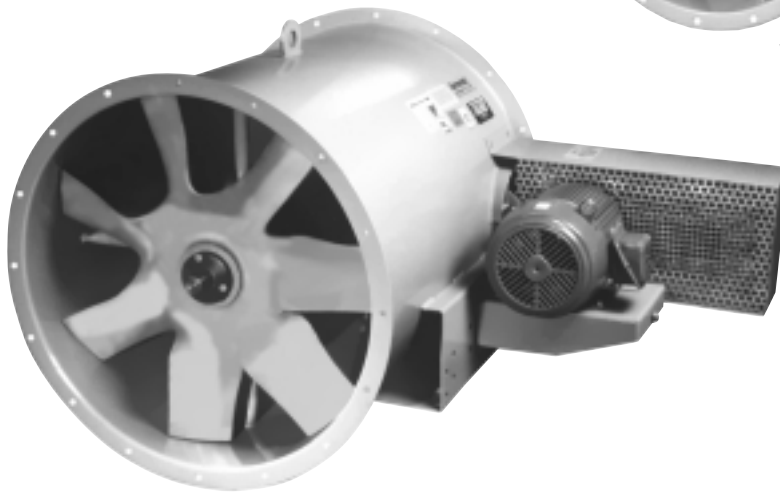


## ***TUBEAXIAL/VANEAXIAL FANS***

*Type "T" Belt Driven  
Models TTABD/VTBD*



**Vane Section  
For Model VTBD**



**Model TTABD**

# Model TTABD/VTBD Tubeaxial/Vaneaxial Fans

Aerovent's Model TTABD tubeaxial fan is a medium pressure tubeaxial fan. It is convertible to a higher pressure vaneaxial, Model VTBD, by attaching a vane section to the discharge.

## Typical Applications

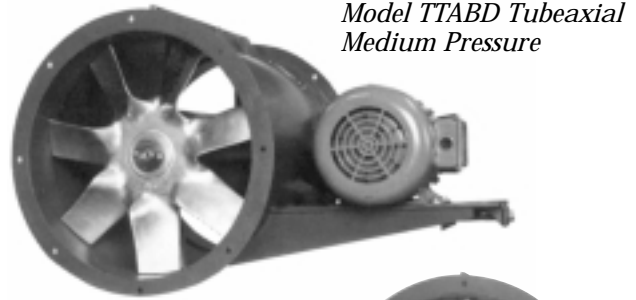
- In-duct space ventilation supply or exhaust
- Roof mounted ventilation
- Industrial fume exhaust
- Spray booth exhaust
- High temperature process ventilation

## Model TTABD – Arrangement 9 Belt Driven Tubeaxial

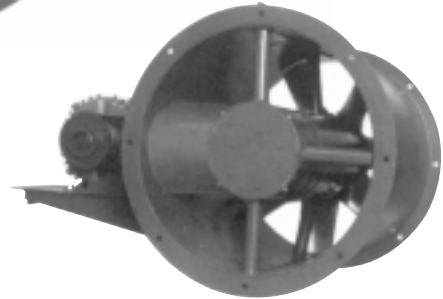
- Available in twelve sizes from 12" to 60" in diameter
- Capacity from 2000 to 83,000 CFM and pressures to 3" w.g.
- Optional high temperature construction to 600°F

## Model VTBD – Arrangement 9 Belt Driven Vaneaxial

- Available in twelve sizes from 12" to 60" in diameter
- Capacity from 2000 to 81,000 CFM and pressures to 4.5" w.g.
- Optional high temperature construction to 600°F



*Model TTABD Tubeaxial  
Medium Pressure*



*Higher Pressure*

## Contents

|                                  |      |
|----------------------------------|------|
| Construction Features . . . . .  | .2-3 |
| Accessories . . . . .            | .4-5 |
| Mounting Arrangements . . . . .  |      |
| Tubeaxial . . . . .              | .6   |
| Vaneaxial . . . . .              | .7   |
| Optional Construction . . . . .  | .8   |
| Performance Data . . . . .       |      |
| Tubeaxial . . . . .              | .9   |
| Vaneaxial . . . . .              | .12  |
| Dimensional Data . . . . .       | .17  |
| Typical Specifications . . . . . | .18  |

The Aerovent Type TTABD Tubeaxial and VTBD Vaneaxial fans shown herein have been tested and rated in accordance with industry accepted test codes, and are guaranteed by Aerovent to deliver rated performance.

©2004 Aerovent, Twin City Fan Companies, Ltd. All rights reserved throughout the world.

"Bulletin illustrations cover the general appearance of Aerovent products at the time of publication and we reserve the right to make changes in design and construction at any time."

# Construction Features

## Propeller Construction

The fan propeller and hub is a precision solid casting of A319 aluminum, having seven airfoil blades and a malleable split taper lock bushing for mounting to the shaft. The blade angle setting is 34° at 3/4 radius. Propellers are statically and dynamically balanced prior to assembly. The complete fan assembly is trim balanced after final assembly. An A240 high temperature aluminum alloy propeller and high temperature lubrication are optional to make this fan suitable for airstream temperatures up to 600°F.



## Housing

Model TTABD and VTBD housings are made of continuously welded, heavy-gauge carbon steel with integrally rolled inlet and outlet flanges. Integral flanges are provided with bolt holes for bolting to fan accessories or ductwork. Housings can be supported by bolting the integral flanges directly to ductwork or can be provided with bolted support legs or welded clips for mounting in a horizontal or vertical position. After fabrication the housing is chemically pretreated, phosphatized, and painted with two coats of air dried acrylic enamel.

Extended grease fittings and grease leads are standardly furnished to permit relubrication of the motor bearings at the exterior of the fan housing.

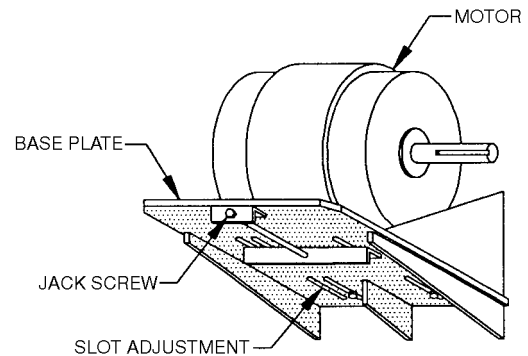
## Belt Driven Design

Well suited for applications where it is advantageous to have the motor out of the airstream due to the presence of corrosive or hazardous fumes, or dirt-laden, hot, or moist air. Arrangement 9 fans include the following features as standard equipment:

- Belts and driven sheave enclosed in a metal tube protected from the airstream.
- Single jackscrew belt tension adjustment (see detail below).
- Standard NEMA foot-mounted motors, of open drip-proof, totally enclosed or explosion-proof design are used on belt driven fans. Motors are squirrel cage induction, single speed, single winding, variable torque type for continuous duty operation.

## Adjusting Belt Tension

All belt driven units are constructed with the motor base plate welded to the outside of the fan casing which provides strength and rigidity. Except for very small motors, the adjustment of the belt tension is accomplished by means of a jackscrew as shown in the illustration below. This arrangement permits adjustment to be made with a minimum of effort, particularly when the motor is of large size.



# Accessories

## Vertical Support Section

The vertical support section is a separate duct section with vertical mounting clips. This section bolts to the fan inlet or outlet and is needed when vertical mounting clips cannot be welded to the fan. (See "Mounting Arrangements," pages 6 and 7.)

TTABD sizes 12-33 require a vertical mounting section for all vertical discharges when vertical mounting clips are needed. The vertical mounting arrangements are designated by adding an "S" to the mounting arrangement (A1, A2, A3 and A4 become SA1, SA2, SA3 and SA4.)

VTBD sizes 12-33 require a vertical mounting section for vertical floor up and vertical ceiling down only. When vertical mounting clips are needed A1 and A3 become SA1 and SA3.

## Horizontal Support Legs

Support legs are available for standard platform or floor mounting. The support legs are bolted to the inlet and discharge flange rings.



## Mounting Brackets

Clips for mounting vibration eliminators are available for vertical floor mounting or vertical and horizontal ceiling suspension.



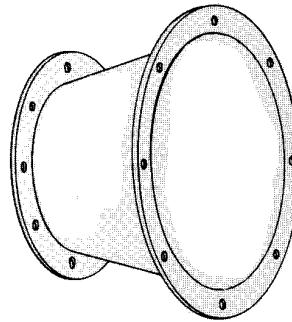
## Inlet Bell with Guard

A spun aerodynamic inlet bell (necessary to minimize inlet losses on installations where ductwork does not precede the fan) shown bolted to fan inlet flange with an inlet guard of spiral wire bolted to inlet bell to provide personnel safety protection.



## Inlet/Outlet Cone

A round-to-round transition bolted to the inlet or discharge flange of the fan casing to provide a smooth connection of the fan to larger ductwork.



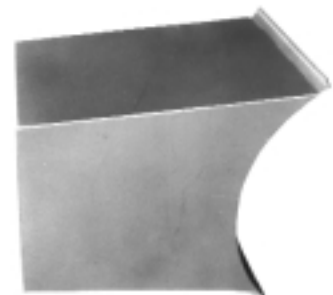
## Shaft Seal

An elastomeric Viton rotary seal rides against a heavy Teflon, bolted-in-place, wear plate which surrounds the shaft of belt driven fans to provide protection of the shaft and bearings when handling dirty, wet or corrosive air. **Note:** The seal does not make the installation gas-tight and is not appropriate in ambient temperatures above 250°F.



## Motor Cover

A vented cover bolted to the exterior of a belt driven fan to provide drip-proof protection of the motor and drive tube when units are installed outdoors in horizontal or vertical configuration. **Note:** The standard belt guard is not provided when a motor cover is specified.



# Accessories

---

## Curb Base

A square-to-round transition piece to convert a tubeaxial fan to a roof ventilator when mounted between a roof curb and the fan inlet flange. A stack cap or other device is necessary for weather protection in installations of this type.



## Companion Ring

A rolled angle ring that mates with the fan casing inlet or discharge flange to provide attachment for slip duct connections.



## Stack Cap

A backdraft damper assembly bolted to the fan discharge flange in vertical upblast rooftop installations. Ideally this device should be selected to handle discharge velocities ranging from 1700 (min.) to 3000 FPM (max.) and will add approximately  $\frac{1}{8}$ " pressure drop to system. For higher or lower discharge velocities, consult factory.



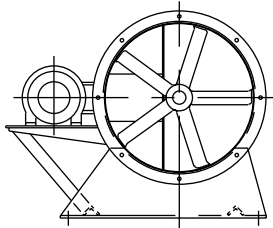
## Propeller Access Section

A short duct section with access door bolted to the inlet or discharge flange of the fan to allow for inspection or cleaning of the fan impeller. Hinged inspection door can be opened or entire half of section can be unbolted for removal of impeller.

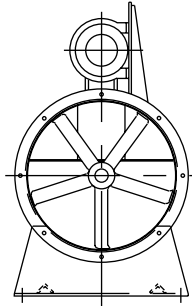


# Mounting Arrangements – TTABD Tubeaxial Fans

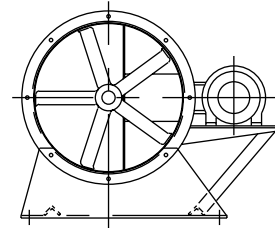
## Horizontal Floor Mounted



**Opposite Std. (Optional Std.)**  
Requires F-2 Motor

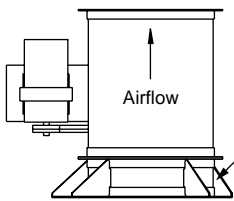


**Top**

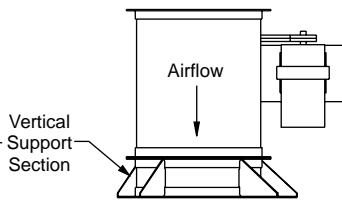


**Standard (Std.)**

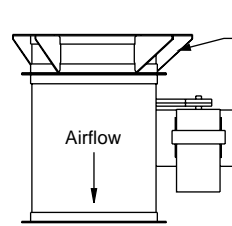
## Vertical Floor & Ceiling Mounted



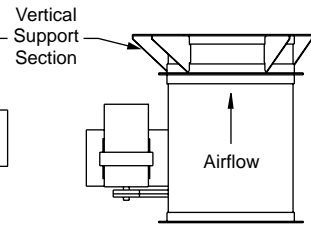
**Floor Up Discharge**  
A1 – Sizes 38–60, No  
Vert. Support Section  
SA1 – Sizes 12–33 With  
Vertical Support Section



**Floor Down Discharge**  
A2 – Sizes 38–60, No  
Vert. Support Section  
SA2 – Sizes 12–33 With  
Vert. Support Section

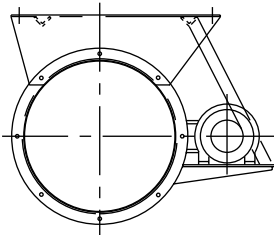


**Ceiling Down Discharge**  
A3 – Sizes 38–60, No  
Vert. Support Section  
SA3 – Sizes 12–33, With  
Vert. Support Section

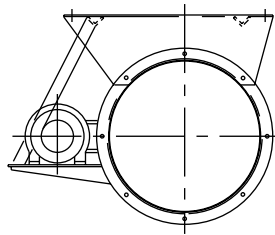


**Ceiling Up Discharge**  
A4 – Sizes 38–60, No  
Vert. Support Section  
SA4 – Sizes 12–33, With  
Vert. Support Section

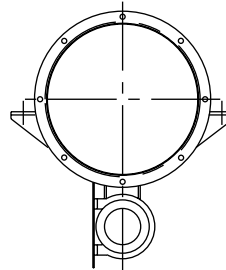
## Horizontal Ceiling Mounted



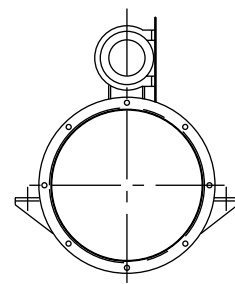
**Right Hand (A9)**



**Left Hand (A10)**  
Requires F-2 Motor



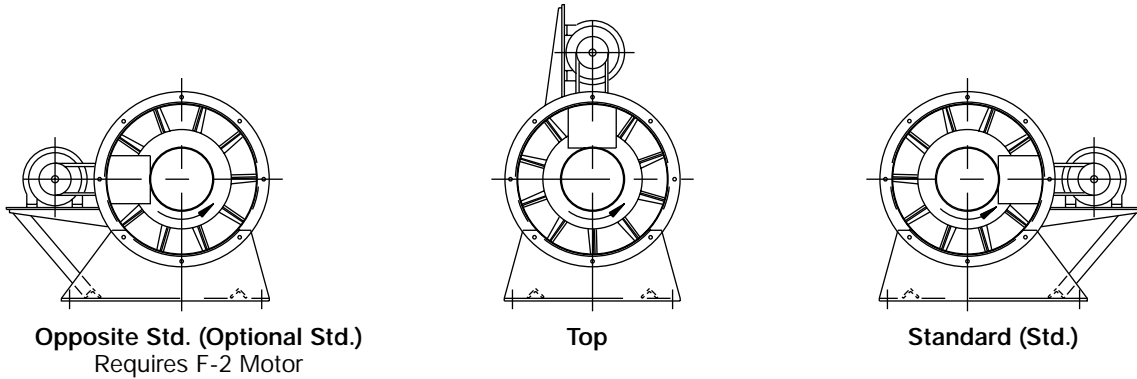
**Bottom (A11)**



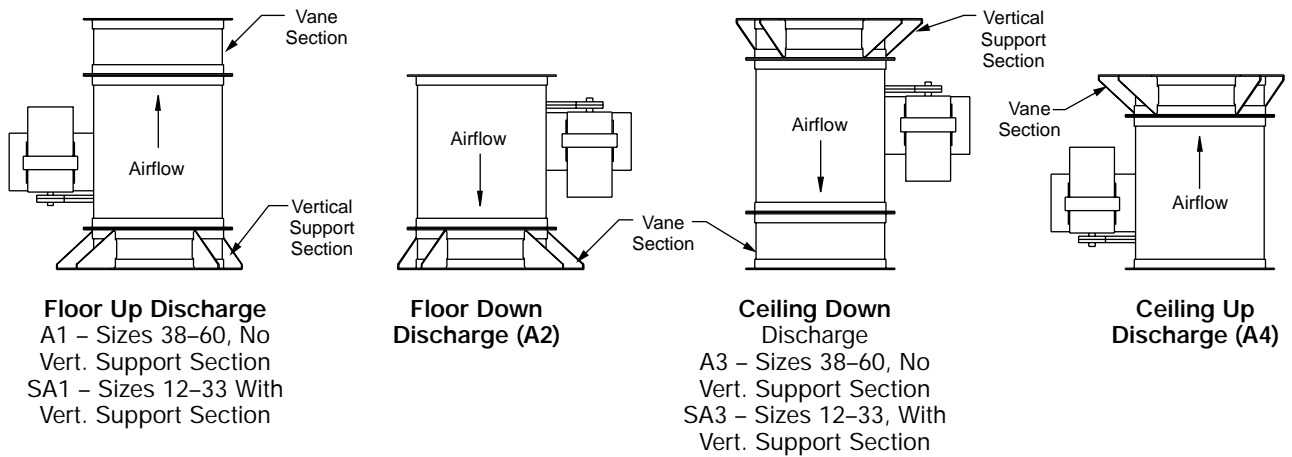
**Top (A12)**

# Mounting Arrangements – VTBD Vaneaxial Fans

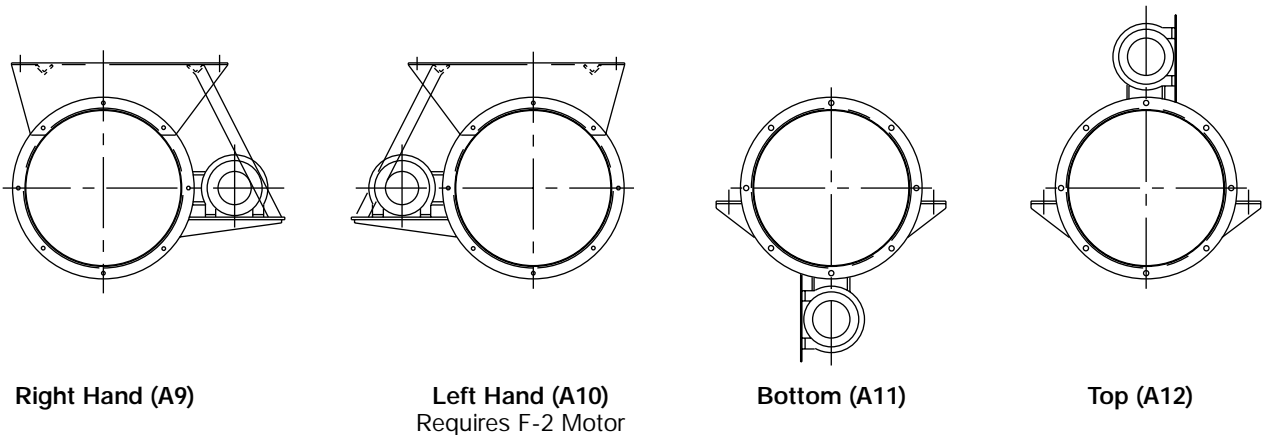
## Horizontal Floor Mounted



## Vertical Floor & Ceiling Mounted



## Horizontal Ceiling Mounted



# Optional Construction

---

## Clamshell Construction

An arrangement offering a convenient method for cleaning the propeller or servicing bearings. This feature is limited to fans of 48" and smaller.



*Clamshell Construction*

## Swingout Construction

Allows for entire fan assembly to swing out freely from existing ductwork. This feature allows for easy access and servicing of fans 48" and smaller.

## Spark Resistant Construction

Belt driven fans can be furnished for AMCA Type B and C spark resistant construction with the addition of an aluminum rub ring around the fan shaft. They can be fitted for AMCA Type A spark resistant construction with all aluminum housing construction, an AMPCO 45 fan shaft, and Monel hardware in the airstream.

## Corrosion Resistant Construction

For handling corrosive fumes, etc. Fan casings can be constructed of hot dipped galvanized steel, stainless steel, aluminum, fiberglass or protected with a wide variety of suitable protective coatings such as Plasite, Heresite, Eisenheiss, etc.



*Swingout Construction*

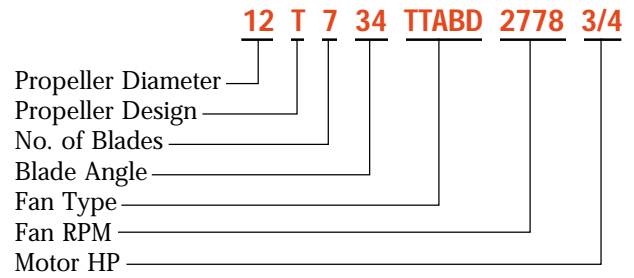
## High Temperature Construction

Belt driven fans can be furnished to operate in temperatures ranging from 275°F to 600°F. For this construction, the fan is supplied with an A240 aluminum, solid cast propeller and high temperature bearing lubrication. Note that the fan must be energized to keep the bearings cool during high temperature operation.

# Performance Data – Tubeaxial

## Catalog Number System

To identify a specific fan for ordering or engineering specifications, it is necessary to show the complete information listed in the tables below under “Catalog Number.” All performance data is available in curve form upon request.



## Size 12 TTABD Belt Driven Type T Tubeaxial

| CATALOG NUMBER |          |      |     | 0.250" SP |      | 0.500" SP |      | 0.750" SP |      | 1.000" SP |      | 1.250" SP |      | 1.500" SP |      | 2.000" SP |     | 2.500" SP |     |
|----------------|----------|------|-----|-----------|------|-----------|------|-----------|------|-----------|------|-----------|------|-----------|------|-----------|-----|-----------|-----|
| PROP           | FAN TYPE | RPM  | BHP | CFM       | BHP  | CFM       | BHP  | CFM       | BHP  | CFM       | BHP  | CFM       | BHP  | CFM       | BHP  | CFM       | BHP | CFM       | BHP |
| 12T734         | TTABD    | 2778 | 3/4 | 1979      | 0.69 | 1782      | 0.71 |           |      |           |      |           |      |           |      |           |     |           |     |
| 12T734         | TTABD    | 3058 | 1   | 2213      | 0.92 | 2043      | 0.94 | 1831      | 0.96 |           |      |           |      |           |      |           |     |           |     |
| 12T734         | TTABD    | 3500 | 1½  | 2574      | 1.38 | 2433      | 1.40 | 2276      | 1.42 | 2080      | 1.44 |           |      |           |      |           |     |           |     |
| 12T734         | TTABD    | 3853 | 2   | 2860      | 1.83 | 2735      | 1.85 | 2599      | 1.88 | 2447      | 1.90 | 2257      | 1.92 |           |      |           |     |           |     |
| 12T734         | TTABD    | 4410 | 3   | 3305      | 2.74 | 3199      | 2.76 | 3087      | 2.79 | 2966      | 2.82 | 2835      | 2.85 | 2681      | 2.87 |           |     |           |     |

## Size 15 TTABD Belt Driven Type T Tubeaxial

| CATALOG NUMBER |          |      |     | 0.250" SP |      | 0.500" SP |      | 0.750" SP |      | 1.000" SP |      | 1.250" SP |      | 1.500" SP |      | 2.000" SP |     | 2.500" SP |     |
|----------------|----------|------|-----|-----------|------|-----------|------|-----------|------|-----------|------|-----------|------|-----------|------|-----------|-----|-----------|-----|
| PROP           | FAN TYPE | RPM  | BHP | CFM       | BHP  | CFM       | BHP  | CFM       | BHP  | CFM       | BHP  | CFM       | BHP  | CFM       | BHP  | CFM       | BHP | CFM       | BHP |
| 15T734         | TTABD    | 1915 | 3/4 | 2577      | 0.70 | 2151      | 0.72 |           |      |           |      |           |      |           |      |           |     |           |     |
| 15T734         | TTABD    | 2108 | 1   | 2903      | 0.93 | 2564      | 0.95 |           |      |           |      |           |      |           |      |           |     |           |     |
| 15T734         | TTABD    | 2413 | 1½  | 3402      | 1.38 | 3132      | 1.41 | 2788      | 1.44 |           |      |           |      |           |      |           |     |           |     |
| 15T734         | TTABD    | 2656 | 2   | 3793      | 1.84 | 3556      | 1.87 | 3285      | 1.90 | 2910      | 1.91 |           |      |           |      |           |     |           |     |
| 15T734         | TTABD    | 3041 | 3   | 4403      | 2.75 | 4204      | 2.78 | 3987      | 2.82 | 3743      | 2.86 | 3432      | 2.87 |           |      |           |     |           |     |
| 15T734         | TTABD    | 3602 | 5   | 5279      | 4.55 | 5117      | 4.59 | 4945      | 4.63 | 4762      | 4.68 | 4566      | 4.72 | 4341      | 4.76 |           |     |           |     |

## Size 18 TTABD Belt Driven Type T Tubeaxial

| CATALOG NUMBER |          |      |     | 0.250" SP |      | 0.500" SP |      | 0.750" SP |      | 1.000" SP |      | 1.250" SP |      | 1.500" SP |      | 2.000" SP |     | 2.500" SP |     |
|----------------|----------|------|-----|-----------|------|-----------|------|-----------|------|-----------|------|-----------|------|-----------|------|-----------|-----|-----------|-----|
| PROP           | FAN TYPE | RPM  | BHP | CFM       | BHP  | CFM       | BHP  | CFM       | BHP  | CFM       | BHP  | CFM       | BHP  | CFM       | BHP  | CFM       | BHP | CFM       | BHP |
| 18T734         | TTABD    | 1370 | 1/2 | 3181      | 0.51 |           |      |           |      |           |      |           |      |           |      |           |     |           |     |
| 18T734         | TTABD    | 1568 | 3/4 | 3800      | 0.75 | 3257      | 0.77 |           |      |           |      |           |      |           |      |           |     |           |     |
| 18T734         | TTABD    | 1726 | 1   | 4276      | 0.99 | 3799      | 1.03 |           |      |           |      |           |      |           |      |           |     |           |     |
| 18T734         | TTABD    | 1976 | 1½  | 5011      | 1.46 | 4622      | 1.51 | 4180      | 1.55 |           |      |           |      |           |      |           |     |           |     |
| 18T734         | TTABD    | 2175 | 2   | 5584      | 1.94 | 5244      | 1.99 | 4860      | 2.05 | 4457      | 2.07 |           |      |           |      |           |     |           |     |
| 18T734         | TTABD    | 2490 | 3   | 6480      | 2.88 | 6193      | 2.95 | 5882      | 3.02 | 5539      | 3.07 | 5187      | 3.10 | 4787      | 3.08 |           |     |           |     |

## Size 22 TTABD Belt Driven Type T Tubeaxial

| CATALOG NUMBER |          |      |     | 0.250" SP |      | 0.500" SP |      | 0.750" SP |      | 1.000" SP |      | 1.250" SP |      | 1.500" SP |      | 2.000" SP |     | 2.500" SP |     |
|----------------|----------|------|-----|-----------|------|-----------|------|-----------|------|-----------|------|-----------|------|-----------|------|-----------|-----|-----------|-----|
| PROP           | FAN TYPE | RPM  | BHP | CFM       | BHP  | CFM       | BHP  | CFM       | BHP  | CFM       | BHP  | CFM       | BHP  | CFM       | BHP  | CFM       | BHP | CFM       | BHP |
| 22T734         | TTABD    | 984  | 1/2 | 3922      | 0.52 |           |      |           |      |           |      |           |      |           |      |           |     |           |     |
| 22T734         | TTABD    | 1126 | 3/4 | 4781      | 0.77 |           |      |           |      |           |      |           |      |           |      |           |     |           |     |
| 22T734         | TTABD    | 1239 | 1   | 5430      | 1.01 | 4582      | 1.04 |           |      |           |      |           |      |           |      |           |     |           |     |
| 22T734         | TTABD    | 1419 | 1½  | 6425      | 1.49 | 5717      | 1.55 | 4842      | 1.55 |           |      |           |      |           |      |           |     |           |     |
| 22T734         | TTABD    | 1561 | 2   | 7188      | 1.97 | 6576      | 2.04 | 5893      | 2.08 |           |      |           |      |           |      |           |     |           |     |
| 22T734         | TTABD    | 1787 | 3   | 8381      | 2.93 | 7875      | 3.02 | 7304      | 3.09 | 6706      | 3.12 |           |      |           |      |           |     |           |     |
| 22T734         | TTABD    | 2119 | 5   | 10101     | 4.84 | 9692      | 4.95 | 9252      | 5.05 | 8772      | 5.14 | 8259      | 5.20 | 7756      | 5.21 |           |     |           |     |

# Performance Data – Tubeaxial

## Size 25 TTABD Belt Driven Type T Tubeaxial

| CATALOG NUMBER |          |      |    | 0.250" SP |       | 0.500" SP |       | 0.750" SP |       | 1.000" SP |      | 1.250" SP |       | 1.500" SP |       | 2.000" SP |       | 2.500" SP |       | 3.000" SP |       |
|----------------|----------|------|----|-----------|-------|-----------|-------|-----------|-------|-----------|------|-----------|-------|-----------|-------|-----------|-------|-----------|-------|-----------|-------|
| PROP           | FAN TYPE | RPM  | HP | CFM       | BHP   | CFM       | BHP   | CFM       | BHP   | CFM       | BHP  | CFM       | BHP   | CFM       | BHP   | CFM       | BHP   | CFM       | BHP   | CFM       | BHP   |
| 25T734         | TTABD    | 1045 | 1  | 6962      | 0.95  | 5660      | 1.01  |           |       |           |      |           |       |           |       |           |       |           |       |           |       |
| 25T734         | TTABD    | 1196 | 1½ | 8244      | 1.38  | 7247      | 1.50  |           |       |           |      |           |       |           |       |           |       |           |       |           |       |
| 25T734         | TTABD    | 1316 | 2  | 9232      | 1.80  | 8395      | 1.95  | 7358      | 2.02  |           |      |           |       |           |       |           |       |           |       |           |       |
| 25T734         | TTABD    | 1507 | 3  | 10770     | 2.66  | 10099     | 2.82  | 9290      | 2.97  | 8356      | 3.03 |           |       |           |       |           |       |           |       |           |       |
| 25T734         | TTABD    | 1786 | 5  | 12973     | 4.34  | 12441     | 4.54  | 11849     | 4.73  | 11168     | 4.92 | 10409     | 5.03  | 9461      | 5.01  |           |       |           |       |           |       |
| 25T734         | TTABD    | 2045 | 7½ | 14991     | 6.45  | 14542     | 6.68  | 14058     | 6.90  | 13530     | 7.12 | 12941     | 7.34  | 12288     | 7.50  |           |       |           |       |           |       |
| 25T734         | TTABD    | 2250 | 10 | 16577     | 8.54  | 16175     | 8.79  | 15750     | 9.04  | 15297     | 9.28 | 14806     | 9.52  | 14268     | 9.76  | 13074     | 10.06 |           |       |           |       |
| 25T734         | TTABD    | 2577 | 15 | 19092     | 12.74 | 18748     | 13.03 | 18390     | 13.31 | 18015     | 13.6 | 17621     | 13.87 | 17204     | 14.15 | 16278     | 14.69 | 15234     | 15.07 | 14082     | 15.13 |

## Size 29 TTABD Belt Driven Type T Tubeaxial

| CATALOG NUMBER |          |      |    | 0.250" SP |       | 0.500" SP |       | 0.750" SP |       | 1.000" SP |       | 1.250" SP |       | 1.500" SP |       | 2.000" SP |       | 2.500" SP |       | 3.000" SP |       |
|----------------|----------|------|----|-----------|-------|-----------|-------|-----------|-------|-----------|-------|-----------|-------|-----------|-------|-----------|-------|-----------|-------|-----------|-------|
| PROP           | FAN TYPE | RPM  | HP | CFM       | BHP   | CFM       | BHP   | CFM       | BHP   | CFM       | BHP   | CFM       | BHP   | CFM       | BHP   | CFM       | BHP   | CFM       | BHP   | CFM       | BHP   |
| 29T734         | TTABD    | 816  | 1  | 8187      | 0.97  |           |       |           |       |           |       |           |       |           |       |           |       |           |       |           |       |
| 29T734         | TTABD    | 934  | 1½ | 9815      | 1.41  | 8215      | 1.51  |           |       |           |       |           |       |           |       |           |       |           |       |           |       |
| 29T734         | TTABD    | 1028 | 2  | 11054     | 1.84  | 9705      | 2.00  |           |       |           |       |           |       |           |       |           |       |           |       |           |       |
| 29T734         | TTABD    | 1177 | 3  | 12961     | 2.70  | 11905     | 2.89  | 10602     | 3.03  |           |       |           |       |           |       |           |       |           |       |           |       |
| 29T734         | TTABD    | 1395 | 5  | 15680     | 4.39  | 14864     | 4.63  | 13916     | 4.86  | 12809     | 5.02  |           |       |           |       |           |       |           |       |           |       |
| 29T734         | TTABD    | 1597 | 7½ | 18156     | 6.50  | 17473     | 6.78  | 16722     | 7.04  | 15869     | 7.31  | 14902     | 7.51  | 13874     | 7.57  |           |       |           |       |           |       |
| 29T734         | TTABD    | 1758 | 10 | 20112     | 8.61  | 19505     | 8.92  | 18852     | 9.21  | 18138     | 9.51  | 17342     | 9.80  | 16458     | 10.01 |           |       |           |       |           |       |
| 29T734         | TTABD    | 3012 | 15 | 23175     | 12.80 | 22658     | 13.15 | 22112     | 13.50 | 21534     | 13.83 | 20915     | 14.17 | 20242     | 14.51 | 18725     | 15.03 | 16981     | 15.11 |           |       |
| 29T734         | TTABD    | 2214 | 20 | 25599     | 16.97 | 25134     | 17.36 | 24650     | 17.74 | 24144     | 18.12 | 23611     | 18.49 | 23047     | 18.86 | 21793     | 19.59 | 20382     | 20.08 | 18802     | 20.15 |

## Size 33 TTABD Belt Driven Type T Tubeaxial

| CATALOG NUMBER |          |      |    | 0.250" SP |       | 0.500" SP |       | 0.750" SP |       | 1.000" SP |       | 1.250" SP |       | 1.500" SP |       | 2.000" SP |       | 2.500" SP |       | 3.000" SP |       |
|----------------|----------|------|----|-----------|-------|-----------|-------|-----------|-------|-----------|-------|-----------|-------|-----------|-------|-----------|-------|-----------|-------|-----------|-------|
| PROP           | FAN TYPE | RPM  | HP | CFM       | BHP   | CFM       | BHP   | CFM       | BHP   | CFM       | BHP   | CFM       | BHP   | CFM       | BHP   | CFM       | BHP   | CFM       | BHP   | CFM       | BHP   |
| 33T734         | TTABD    | 829  | 2  | 12871     | 1.87  | 10839     | 2.02  |           |       |           |       |           |       |           |       |           |       |           |       |           |       |
| 33T734         | TTABD    | 949  | 3  | 15182     | 2.73  | 13590     | 2.96  |           |       |           |       |           |       |           |       |           |       |           |       |           |       |
| 33T734         | TTABD    | 1125 | 5  | 18460     | 4.44  | 17264     | 4.72  | 15813     | 4.98  | 14106     | 5.04  |           |       |           |       |           |       |           |       |           |       |
| 33T734         | TTABD    | 1287 | 7½ | 21413     | 6.55  | 20423     | 6.87  | 19299     | 7.19  | 17986     | 7.47  | 16550     | 7.56  |           |       |           |       |           |       |           |       |
| 33T734         | TTABD    | 1417 | 10 | 23755     | 8.66  | 22881     | 9.02  | 21922     | 9.37  | 20838     | 9.72  | 19608     | 9.99  | 18310     | 10.09 |           |       |           |       |           |       |
| 33T734         | TTABD    | 1622 | 15 | 27417     | 12.86 | 26676     | 13.28 | 25885     | 13.68 | 25032     | 14.08 | 24093     | 14.48 | 23057     | 14.85 | 20783     | 15.14 |           |       |           |       |
| 33T734         | TTABD    | 1785 | 20 | 30310     | 17.04 | 29646     | 17.50 | 28948     | 17.95 | 28210     | 18.40 | 27421     | 18.83 | 26564     | 19.28 | 24633     | 19.99 | 22478     | 20.16 |           |       |
| 33T734         | TTABD    | 1923 | 25 | 32749     | 21.22 | 32140     | 21.72 | 31504     | 22.22 | 30837     | 22.70 | 30135     | 23.17 | 29389     | 23.64 | 27727     | 24.57 | 25871     | 25.14 | 23650     | 25.12 |
| 33T734         | TTABD    | 2044 | 30 | 34883     | 25.42 | 34313     | 25.95 | 33722     | 26.48 | 33107     | 26.99 | 32465     | 27.50 | 31791     | 28.00 | 30315     | 29.01 | 28644     | 29.88 | 26872     | 30.27 |

## Size 38 TTABD Belt Driven Type T Tubeaxial

| CATALOG NUMBER |          |      |    | 0.250" SP |       | 0.500" SP |       | 0.750" SP |       | 1.000" SP |       | 1.250" SP |       | 1.500" SP |       | 2.000" SP |       | 2.500" SP |       | 3.000" SP |     |
|----------------|----------|------|----|-----------|-------|-----------|-------|-----------|-------|-----------|-------|-----------|-------|-----------|-------|-----------|-------|-----------|-------|-----------|-----|
| PROP           | FAN TYPE | RPM  | HP | CFM       | BHP   | CFM       | BHP   | CFM       | BHP   | CFM       | BHP   | CFM       | BHP   | CFM       | BHP   | CFM       | BHP   | CFM       | BHP   | CFM       | BHP |
| 38T734         | TTABD    | 645  | 2  | 14751     | 1.92  |           |       |           |       |           |       |           |       |           |       |           |       |           |       |           |     |
| 38T734         | TTABD    | 739  | 3  | 17577     | 2.82  | 15226     | 2.98  |           |       |           |       |           |       |           |       |           |       |           |       |           |     |
| 38T734         | TTABD    | 876  | 5  | 21535     | 4.59  | 19739     | 4.83  | 17632     | 5.01  |           |       |           |       |           |       |           |       |           |       |           |     |
| 38T734         | TTABD    | 1003 | 7½ | 25108     | 6.78  | 23609     | 7.10  | 21947     | 7.32  | 20056     | 7.53  |           |       |           |       |           |       |           |       |           |     |
| 38T734         | TTABD    | 1104 | 10 | 27909     | 8.96  | 26581     | 9.33  | 25143     | 9.62  | 23548     | 9.84  | 21789     | 10.08 |           |       |           |       |           |       |           |     |
| 38T734         | TTABD    | 1263 | 15 | 32271     | 13.28 | 31141     | 13.72 | 29942     | 14.12 | 28668     | 14.43 | 27287     | 14.68 | 25783     | 14.94 |           |       |           |       |           |     |
| 38T734         | TTABD    | 1390 | 20 | 35726     | 17.59 | 34714     | 18.09 | 33653     | 18.55 | 32538     | 18.96 | 31364     | 19.28 | 30105     | 19.55 | 27321     | 20.13 |           |       |           |     |
| 38T734         | TTABD    | 1498 | 25 | 38650     | 21.92 | 37719     | 22.48 | 36751     | 22.99 | 35742     | 23.46 | 34688     | 23.86 | 33583     | 24.19 | 31140     | 24.77 | 28270     | 25.32 |           |     |

## Size 43 TTABD Belt Driven Type T Tubeaxial

| CATALOG NUMBER |          |      |    | 0.250" SP |       | 0.500" SP |       | 0.750" SP |       | 1.000" SP |       | 1.250" SP |       | 1.500" SP |       | 2.000" SP |       | 2.500" SP |       | 3.000" SP |       |
|----------------|----------|------|----|-----------|-------|-----------|-------|-----------|-------|-----------|-------|-----------|-------|-----------|-------|-----------|-------|-----------|-------|-----------|-------|
| PROP           | FAN TYPE | RPM  | HP | CFM       | BHP   | CFM       | BHP   | CFM       | BHP   | CFM       | BHP   | CFM       | BHP   | CFM       | BHP   | CFM       | BHP   | CFM       | BHP   | CFM       | BHP   |
| 43T734         | TTABD    | 526  | 2  | 16891     | 1.95  |           |       |           |       |           |       |           |       |           |       |           |       |           |       |           |       |
| 43T734         | TTABD    | 603  | 3  | 20344     | 2.88  | 16865     | 3.06  |           |       |           |       |           |       |           |       |           |       |           |       |           |       |
| 43T734         | TTABD    | 714  | 5  | 25080     | 4.66  | 22485     | 4.91  | 18990     | 5.07  |           |       |           |       |           |       |           |       |           |       |           |       |
| 43T734         | TTABD    | 818  | 7½ | 29373     | 6.89  | 27241     | 7.23  | 24781     | 7.47  |           |       |           |       |           |       |           |       |           |       |           |       |
| 43T734         | TTABD    | 900  | 10 | 32700     | 9.08  | 30818     | 9.49  | 28741     | 9.79  | 26382     | 10.06 |           |       |           |       |           |       |           |       |           |       |
| 43T734         | TTABD    | 1030 | 15 | 37905     | 13.44 | 36313     | 13.95 | 34606     | 14.38 | 32755     | 14.70 | 30696     | 14.99 | 28337     | 15.27 |           |       |           |       |           |       |
| 43T734         | TTABD    | 1134 | 20 | 42027     | 17.81 | 40607     | 18.39 | 39103     | 18.91 | 37509     | 19.33 | 35792     | 19.66 | 33910     | 19.99 |           |       |           |       |           |       |
| 43T734         | TTABD    | 1222 | 25 | 45495     | 22.18 | 44191     | 22.82 | 42824     | 23.40 | 41386     | 23.92 | 39871     | 24.32 | 38242     | 24.67 | 34634     | 25.41 |           |       |           |       |
| 43T734         | TTABD    | 1298 | 30 | 48478     | 26.49 | 47260     | 27.18 | 45991     | 27.82 | 44664     | 28.40 | 43277     | 28.89 | 41816     | 29.29 | 38584     | 30.03 |           |       |           |       |
| 43T734         | TTABD    | 1429 | 40 | 53600     | 35.18 | 52505     | 35.95 | 51373     | 36.68 | 50201     | 37.36 | 48984     | 37.98 | 47722     | 38.52 | 45017     | 39.37 | 42018     | 40.22 | 38066     | 40.68 |

# Performance Data – Tubeaxial

## Size 48 TTABD Belt Driven Type T Tubeaxial

| CATALOG NUMBER |          |      |    | 0.250" SP |       | 0.500" SP |       | 0.750" SP |       | 1.000" SP |       | 1.250" SP |       | 1.500" SP |       | 2.000" SP |       | 2.500" SP |       | 3.000" SP |       |
|----------------|----------|------|----|-----------|-------|-----------|-------|-----------|-------|-----------|-------|-----------|-------|-----------|-------|-----------|-------|-----------|-------|-----------|-------|
| PROP           | FAN TYPE | RPM  | HP | CFM       | BHP   | CFM       | BHP   | CFM       | BHP   | CFM       | BHP   | CFM       | BHP   | CFM       | BHP   | CFM       | BHP   | CFM       | BHP   | CFM       | BHP   |
| 48T734         | TTABD    | 503  | 3  | 23062     | 2.93  |           |       |           |       |           |       |           |       |           |       |           |       |           |       |           |       |
| 48T734         | TTABD    | 596  | 5  | 28694     | 4.75  | 25053     | 5.01  |           |       |           |       |           |       |           |       |           |       |           |       |           |       |
| 48T734         | TTABD    | 682  | 7½ | 33701     | 6.98  | 30765     | 7.35  | 27300     | 7.63  |           |       |           |       |           |       |           |       |           |       |           |       |
| 48T734         | TTABD    | 751  | 10 | 37634     | 9.21  | 35063     | 9.67  | 32136     | 9.97  | 28617     | 10.26 |           |       |           |       |           |       |           |       |           |       |
| 48T734         | TTABD    | 859  | 15 | 43695     | 13.60 | 41531     | 14.17 | 39179     | 14.62 | 36544     | 14.95 | 33618     | 15.32 |           |       |           |       |           |       |           |       |
| 48T734         | TTABD    | 946  | 20 | 48521     | 18.01 | 46596     | 18.67 | 44538     | 19.24 | 42325     | 19.66 | 39864     | 20.03 | 37218     | 20.44 |           |       |           |       |           |       |
| 48T734         | TTABD    | 1019 | 25 | 52541     | 22.39 | 50777     | 23.12 | 48912     | 23.77 | 46933     | 24.30 | 44806     | 24.72 | 42472     | 25.12 |           |       |           |       |           |       |
| 48T734         | TTABD    | 1083 | 30 | 56050     | 26.78 | 54406     | 27.57 | 52679     | 28.28 | 50861     | 28.90 | 48940     | 29.40 | 46868     | 29.81 | 42241     | 30.71 |           |       |           |       |
| 48T734         | TTABD    | 1192 | 40 | 61999     | 35.51 | 60523     | 36.40 | 58988     | 37.22 | 57388     | 37.98 | 55718     | 38.63 | 53969     | 39.17 | 50106     | 40.10 | 45656     | 41.03 |           |       |
| 48T734         | TTABD    | 1284 | 50 | 67000     | 44.23 | 65639     | 45.19 | 64234     | 46.11 | 62779     | 46.96 | 61269     | 47.73 | 59703     | 48.41 | 56349     | 49.48 | 52630     | 40.53 | 47886     | 51.20 |
| 48T734         | TTABD    | 1364 | 60 | 71336     | 52.88 | 70062     | 53.92 | 68752     | 54.91 | 67401     | 55.84 | 66007     | 56.70 | 64566     | 57.50 | 61530     | 58.77 | 58182     | 59.81 | 54600     | 61.01 |

## Size 54 TTABD Belt Driven Type T Tubeaxial

| CATALOG NUMBER |          |     |    | 0.250" SP |       | 0.500" SP |       | 0.750" SP |       | 1.000" SP |       | 1.250" SP |       | 1.500" SP |       | 2.000" SP |       | 2.500" SP |     | 3.000" SP |     |
|----------------|----------|-----|----|-----------|-------|-----------|-------|-----------|-------|-----------|-------|-----------|-------|-----------|-------|-----------|-------|-----------|-----|-----------|-----|
| PROP           | FAN TYPE | RPM | HP | CFM       | BHP   | CFM       | BHP   | CFM       | BHP   | CFM       | BHP   | CFM       | BHP   | CFM       | BHP   | CFM       | BHP   | CFM       | BHP | CFM       | BHP |
| 54T734         | TTABD    | 412 | 3  | 26006     | 2.94  |           |       |           |       |           |       |           |       |           |       |           |       |           |     |           |     |
| 54T734         | TTABD    | 488 | 5  | 32761     | 4.76  | 27470     | 5.05  |           |       |           |       |           |       |           |       |           |       |           |     |           |     |
| 54T734         | TTABD    | 559 | 7½ | 38760     | 7.00  | 34554     | 7.38  |           |       |           |       |           |       |           |       |           |       |           |     |           |     |
| 54T734         | TTABD    | 615 | 10 | 43370     | 9.21  | 39730     | 9.69  | 35459     | 10.04 |           |       |           |       |           |       |           |       |           |     |           |     |
| 54T734         | TTABD    | 704 | 15 | 50557     | 13.60 | 47521     | 14.23 | 44149     | 14.68 | 40313     | 15.10 |           |       |           |       |           |       |           |     |           |     |
| 54T734         | TTABD    | 775 | 20 | 56209     | 17.97 | 53519     | 18.71 | 50606     | 19.30 | 47370     | 19.73 | 43800     | 20.21 |           |       |           |       |           |     |           |     |
| 54T734         | TTABD    | 835 | 25 | 60946     | 22.34 | 58489     | 23.16 | 55860     | 23.87 | 53027     | 24.39 | 49873     | 24.85 | 46447     | 25.36 |           |       |           |     |           |     |
| 54T734         | TTABD    | 887 | 30 | 65028     | 26.65 | 62740     | 27.55 | 60313     | 28.34 | 57733     | 28.97 | 54934     | 29.47 | 51889     | 30.00 |           |       |           |     |           |     |
| 54T734         | TTABD    | 977 | 40 | 72055     | 35.40 | 70008     | 36.41 | 67863     | 37.34 | 65608     | 38.15 | 63232     | 38.80 | 60684     | 39.35 | 55047     | 40.52 |           |     |           |     |

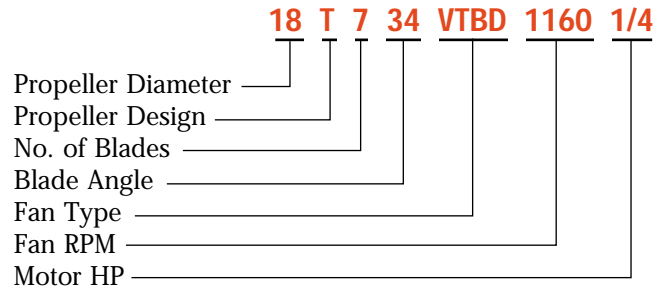
## Size 60 TTABD Belt Driven Type T Tubeaxial

| CATALOG NUMBER |          |     |    | 0.250" SP |       | 0.500" SP |       | 0.750" SP |       | 1.000" SP |       | 1.250" SP |       | 1.500" SP |       | 2.000" SP |     | 2.500" SP |     | 3.000" SP |     |
|----------------|----------|-----|----|-----------|-------|-----------|-------|-----------|-------|-----------|-------|-----------|-------|-----------|-------|-----------|-----|-----------|-----|-----------|-----|
| PROP           | FAN TYPE | RPM | HP | CFM       | BHP   | CFM       | BHP   | CFM       | BHP   | CFM       | BHP   | CFM       | BHP   | CFM       | BHP   | CFM       | BHP | CFM       | BHP | CFM       | BHP |
| 60T734         | TTABD    | 413 | 5  | 37320     | 4.93  |           |       |           |       |           |       |           |       |           |       |           |     |           |     |           |     |
| 60T734         | TTABD    | 473 | 7½ | 44395     | 7.25  | 38632     | 7.66  |           |       |           |       |           |       |           |       |           |     |           |     |           |     |
| 60T734         | TTABD    | 520 | 10 | 49772     | 9.50  | 44845     | 10.01 | 38668     | 10.40 |           |       |           |       |           |       |           |     |           |     |           |     |
| 60T734         | TTABD    | 596 | 15 | 58273     | 14.06 | 54212     | 14.76 | 49568     | 15.24 | 43814     | 15.65 |           |       |           |       |           |     |           |     |           |     |
| 60T734         | TTABD    | 656 | 20 | 64871     | 18.56 | 61285     | 19.40 | 57348     | 20.01 | 52879     | 20.52 |           |       |           |       |           |     |           |     |           |     |
| 60T734         | TTABD    | 706 | 25 | 70317     | 22.98 | 67046     | 23.92 | 63511     | 24.66 | 59608     | 25.21 | 55304     | 25.81 |           |       |           |     |           |     |           |     |
| 60T734         | TTABD    | 750 | 30 | 75080     | 27.42 | 72039     | 28.43 | 68786     | 29.30 | 65277     | 29.94 | 61369     | 30.51 | 57109     | 31.13 |           |     |           |     |           |     |
| 60T734         | TTABD    | 826 | 40 | 83254     | 36.37 | 80540     | 37.53 | 77674     | 38.56 | 74640     | 39.42 | 71393     | 40.09 | 67823     | 40.71 |           |     |           |     |           |     |

# Performance Data – Vaneaxial

## Catalog Number System

To identify a specific fan for ordering or engineering specifications, it is necessary to show the complete information listed in the tables below under “Catalog Number.” All performance data is available in curve form upon request.



## Size 12 VTBD Belt Driven Type T Vaneaxial

| CATALOG NUMBER |          |      |     | 0.250" SP |       | 0.500" SP |       | 0.750" SP |       | 1.000" SP |       | 1.250" SP |      | 1.500" SP |      | 2.000" SP |      | 2.500" SP |      | 3.000" SP |     |
|----------------|----------|------|-----|-----------|-------|-----------|-------|-----------|-------|-----------|-------|-----------|------|-----------|------|-----------|------|-----------|------|-----------|-----|
| PROP           | FAN TYPE | RPM  | HP  | CFM       | BHP   | CFM       | BHP   | CFM       | BHP   | CFM       | BHP   | CFM       | BHP  | CFM       | BHP  | CFM       | BHP  | CFM       | BHP  | CFM       | BHP |
| 12T734         | VTBD     | 2778 | 3/4 | 1978      | 0.734 | 1861      | 0.752 | 1723      | 0.751 | 1565      | 0.753 |           |      |           |      |           |      |           |      |           |     |
| 12T734         | VTBD     | 3058 | 1   | 2199      | 0.974 | 2095      | 0.996 | 1979      | 1.01  | 1846      | 1.00  | 1698      | 1.00 |           |      |           |      |           |      |           |     |
| 12T734         | VTBD     | 3500 | 1½  | 2543      | 1.45  | 2456      | 1.48  | 2361      | 1.50  | 2258      | 1.51  | 2142      | 1.50 | 2017      | 1.50 |           |      |           |      |           |     |
| 12T734         | VTBD     | 3853 | 2   | 2816      | 1.93  | 2738      | 1.96  | 2655      | 1.99  | 2567      | 2.01  | 2470      | 2.01 | 2365      | 2.00 | 2131      | 2.01 |           |      |           |     |
| 12T734         | VTBD     | 4410 | 3   | 3243      | 2.88  | 3177      | 2.92  | 3107      | 2.95  | 3034      | 2.98  | 2957      | 3.01 | 2875      | 3.01 | 2693      | 3.00 | 2492      | 3.01 |           |     |

## Size 15 VTBD Belt Driven Type T Vaneaxial

| CATALOG NUMBER |          |      |     | 0.250" SP |       | 0.500" SP |       | 0.750" SP |       | 1.000" SP |      | 1.250" SP |      | 1.500" SP |      | 2.000" SP |      | 2.500" SP |      | 3.000" SP |      |
|----------------|----------|------|-----|-----------|-------|-----------|-------|-----------|-------|-----------|------|-----------|------|-----------|------|-----------|------|-----------|------|-----------|------|
| PROP           | FAN TYPE | RPM  | HP  | CFM       | BHP   | CFM       | BHP   | CFM       | BHP   | CFM       | BHP  | CFM       | BHP  | CFM       | BHP  | CFM       | BHP  | CFM       | BHP  | CFM       | BHP  |
| 15T734         | VTBD     | 1915 | 3/4 | 2610      | 0.742 | 2380      | 0.753 | 2097      | 0.753 |           |      |           |      |           |      |           |      |           |      |           |      |
| 15T734         | VTBD     | 2108 | 1   | 2913      | 0.983 | 2714      | 1.00  | 2478      | 1.00  | 2185      | 1.00 |           |      |           |      |           |      |           |      |           |      |
| 15T734         | VTBD     | 2413 | 1½  | 3384      | 1.46  | 3219      | 1.50  | 3034      | 1.51  | 2820      | 1.50 | 2579      | 1.51 |           |      |           |      |           |      |           |      |
| 15T734         | VTBD     | 2656 | 2   | 3755      | 1.94  | 3609      | 1.98  | 3449      | 2.01  | 3272      | 2.01 | 3073      | 2.00 | 2853      | 2.01 |           |      |           |      |           |      |
| 15T734         | VTBD     | 3041 | 3   | 4337      | 2.89  | 4213      | 2.95  | 4081      | 2.99  | 3940      | 3.01 | 3786      | 3.01 | 3618      | 3.00 | 3236      | 3.02 |           |      |           |      |
| 15T734         | VTBD     | 3602 | 5   | 5178      | 4.78  | 5076      | 4.85  | 4969      | 4.91  | 4858      | 4.96 | 4741      | 4.99 | 4618      | 5.01 | 43465     | 5.00 | 4044      | 5.00 | 3643      | 4.98 |

## Size 18 VTBD Belt Driven Type T Vaneaxial

| CATALOG NUMBER |          |      |     | 0.250" SP |      | 0.500" SP |       | 0.750" SP |       | 1.000" SP |       | 1.250" SP |      | 1.500" SP |      |
|----------------|----------|------|-----|-----------|------|-----------|-------|-----------|-------|-----------|-------|-----------|------|-----------|------|
| PROP           | FAN TYPE | RPM  | HP  | CFM       | BHP  | CFM       | BHP   | CFM       | BHP   | CFM       | BHP   | CFM       | BHP  | CFM       | BHP  |
| 18T734         | VTBD     | 1370 | 0.5 | 3287      | 0.48 | 2822      | 0.503 |           |       |           |       |           |      |           |      |
| 18T734         | VTBD     | 1568 | 3/4 | 3870      | 0.72 | 3502      | 0.745 | 3032      | 0.751 |           |       |           |      |           |      |
| 18T734         | VTBD     | 1726 | 1   | 4325      | 0.95 | 4004      | 0.981 | 3629      | 1.00  | 3133      | 0.993 |           |      |           |      |
| 18T734         | VTBD     | 1976 | 1½  | 5032      | 1.41 | 4763      | 1.45  | 4468      | 1.48  | 4130      | 1.51  | 3708      | 1.50 |           |      |
| 18T734         | VTBD     | 2175 | 2   | 5588      | 1.87 | 5349      | 1.92  | 5092      | 1.96  | 4813      | 1.99  | 4494      | 2.01 | 4108      | 2.00 |
| 18T734         | VTBD     | 2490 | 3   | 6459      | 2.80 | 6256      | 2.85  | 6041      | 2.89  | 5814      | 2.94  | 5572      | 2.98 | 5305      | 3.01 |
| 18T734         | VTBD     | 2952 | 5   | 7725      | 4.64 | 7557      | 4.70  | 7383      | 4.75  | 7202      | 4.81  | 7014      | 4.86 | 6818      | 4.91 |
| 18T734         | VTBD     | 3379 | 7½  | 8887      | 6.94 | 8742      | 7.00  | 8594      | 7.07  | 8441      | 7.13  | 8283      | 7.19 | 8120      | 7.25 |
| CATALOG NUMBER |          |      |     | 2.000" SP |      | 2.500" SP |       | 3.000" SP |       | 3.500" SP |       | 4.000" SP |      | 4.500" SP |      |
| PROP           | FAN TYPE | RPM  | HP  | CFM       | BHP  | CFM       | BHP   | CFM       | BHP   | CFM       | BHP   | CFM       | BHP  | CFM       | BHP  |
| 18T734         | VTBD     | 1370 | 0.5 |           |      |           |       |           |       |           |       |           |      |           |      |
| 18T734         | VTBD     | 1568 | 3/4 |           |      |           |       |           |       |           |       |           |      |           |      |
| 18T734         | VTBD     | 1726 | 1   |           |      |           |       |           |       |           |       |           |      |           |      |
| 18T734         | VTBD     | 1976 | 1½  |           |      |           |       |           |       |           |       |           |      |           |      |
| 18T734         | VTBD     | 2175 | 2   |           |      |           |       |           |       |           |       |           |      |           |      |
| 18T734         | VTBD     | 2490 | 3   | 4648      | 2.99 |           |       |           |       |           |       |           |      |           |      |
| 18T734         | VTBD     | 2952 | 5   | 6391      | 5.01 | 5891      | 5.03  | 5258      | 4.96  |           |       |           |      |           |      |
| 18T734         | VTBD     | 3379 | 7½  | 7779      | 7.38 | 7410      | 7.49  | 6996      | 7.54  | 6515      | 7.51  | 5933      | 7.42 |           |      |

# Performance Data – Vaneaxial

## Size 22 VTBD Belt Driven Type T Vaneaxial

| CATALOG NUMBER |          |      |     | 0.250" SP |       | 0.500" SP |       | 0.750" SP |      | 1.000" SP |      | 1.250" SP |      | 1.500" SP |      | 2.000" SP |      | 2.500" SP |      | 3.000" SP |      |
|----------------|----------|------|-----|-----------|-------|-----------|-------|-----------|------|-----------|------|-----------|------|-----------|------|-----------|------|-----------|------|-----------|------|
| PROP           | FAN TYPE | RPM  | HP  | CFM       | BHP   | CFM       | BHP   | CFM       | BHP  | CFM       | BHP  | CFM       | BHP  | CFM       | BHP  | CFM       | BHP  | CFM       | BHP  | CFM       | BHP  |
| 22T734         | VTBD     | 984  | 1/2 | 4146      | 0.496 | 3189      | 0.500 |           |      |           |      |           |      |           |      |           |      |           |      |           |      |
| 22T734         | VTBD     | 1126 | 3/4 | 4937      | 0.732 | 4249      | 0.761 |           |      |           |      |           |      |           |      |           |      |           |      |           |      |
| 22T734         | VTBD     | 1239 | 1   | 5547      | 0.967 | 4967      | 1.01  | 4182      | 1.00 |           |      |           |      |           |      |           |      |           |      |           |      |
| 22T734         | VTBD     | 1419 | 1½  | 6496      | 1.44  | 6019      | 1.49  | 5466      | 1.52 | 4734      | 1.51 |           |      |           |      |           |      |           |      |           |      |
| 22T734         | VTBD     | 1561 | 2   | 7231      | 1.90  | 6811      | 1.96  | 6345      | 2.01 | 5797      | 2.03 | 5085      | 2.00 |           |      |           |      |           |      |           |      |
| 22T734         | VTBD     | 1787 | 3   | 8386      | 2.84  | 8030      | 2.90  | 7649      | 2.96 | 7234      | 3.01 | 6762      | 3.04 | 6195      | 3.03 |           |      |           |      |           |      |
| 22T734         | VTBD     | 2119 | 5   | 10060     | 4.70  | 9769      | 4.77  | 9464      | 4.84 | 9142      | 4.91 | 8803      | 4.98 | 8437      | 5.04 | 7574      | 5.06 |           |      |           |      |
| 22T734         | VTBD     | 2426 | 7½  | 11594     | 7.02  | 11344     | 7.11  | 11085     | 7.19 | 10816     | 7.27 | 10536     | 7.35 | 10245     | 7.43 | 9614      | 7.57 | 8875      | 7.61 | 7942      | 7.51 |

## Size 25 VTBD Belt Driven Type T Vaneaxial

| CATALOG NUMBER |          |      |    | 0.250" SP |       | 0.500" SP |       | 0.750" SP |       | 1.000" SP |       | 1.250" SP |       | 1.500" SP |       |
|----------------|----------|------|----|-----------|-------|-----------|-------|-----------|-------|-----------|-------|-----------|-------|-----------|-------|
| PROP           | FAN TYPE | RPM  | HP | CFM       | BHP   | CFM       | BHP   | CFM       | BHP   | CFM       | BHP   | CFM       | BHP   | CFM       | BHP   |
| 25T734         | VTBD     | 1045 | 1  | 6971      | 0.933 | 6175      | 1.00  | 5051      | 0.98  |           |       |           |       |           |       |
| 25T734         | VTBD     | 1196 | 1½ | 8181      | 1.38  | 7516      | 1.46  | 6761      | 1.51  | 5675      | 1.46  |           |       |           |       |
| 25T734         | VTBD     | 1316 | 2  | 9126      | 1.81  | 8528      | 1.90  | 7896      | 1.99  | 7144      | 2.01  |           |       |           |       |
| 25T734         | VTBD     | 1507 | 3  | 10609     | 2.69  | 10094     | 2.79  | 9565      | 2.89  | 9003      | 2.99  | 8358      | 3.02  | 7528      | 2.97  |
| 25T734         | VTBD     | 1786 | 5  | 12744     | 4.44  | 12317     | 4.55  | 11878     | 4.67  | 11432     | 4.79  | 10972     | 4.91  | 10471     | 5.00  |
| 25T734         | VTBD     | 2045 | 7½ | 14706     | 6.62  | 14337     | 6.75  | 13960     | 6.89  | 13575     | 7.02  | 13185     | 7.16  | 12790     | 7.30  |
| 25T734         | VTBD     | 2251 | 10 | 16257     | 8.79  | 15924     | 8.94  | 15585     | 9.09  | 15239     | 9.24  | 14888     | 9.38  | 14534     | 9.54  |
| 25T734         | VTBD     | 2577 | 15 | 18701     | 13.14 | 18412     | 13.31 | 18119     | 13.48 | 17821     | 13.65 | 17520     | 13.82 | 17215     | 13.98 |
| CATALOG NUMBER |          |      |    | 2.000" SP |       | 2.500" SP |       | 3.000" SP |       | 3.500" SP |       | 4.000" SP |       | 4.500" SP |       |
| PROP           | FAN TYPE | RPM  | HP | CFM       | BHP   | CFM       | BHP   | CFM       | BHP   | CFM       | BHP   | CFM       | BHP   | CFM       | BHP   |
| 25T734         | VTBD     | 1045 | 1  |           |       |           |       |           |       |           |       |           |       |           |       |
| 25T734         | VTBD     | 1196 | 1½ |           |       |           |       |           |       |           |       |           |       |           |       |
| 25T734         | VTBD     | 1316 | 2  |           |       |           |       |           |       |           |       |           |       |           |       |
| 25T734         | VTBD     | 1507 | 3  |           |       |           |       |           |       |           |       |           |       |           |       |
| 25T734         | VTBD     | 1786 | 5  | 9260      | 5.00  |           |       |           |       |           |       |           |       |           |       |
| 25T734         | VTBD     | 2045 | 7½ | 11927     | 7.52  | 10909     | 7.54  | 9311      | 7.15  |           |       |           |       |           |       |
| 25T734         | VTBD     | 2251 | 10 | 13807     | 9.85  | 12998     | 10.04 | 12069     | 10.06 | 10819     | 9.78  |           |       |           |       |
| 25T734         | VTBD     | 2577 | 15 | 16596     | 14.33 | 15965     | 14.69 | 15288     | 14.98 | 14539     | 15.11 | 13691     | 15.07 | 12608     | 14.77 |

## Size 29 VTBD Belt Driven Type T Vaneaxial

| CATALOG NUMBER |          |      |    | 0.250" SP |       | 0.500" SP |       | 0.750" SP |       | 1.000" SP |       | 1.250" SP |       | 1.500" SP |       |
|----------------|----------|------|----|-----------|-------|-----------|-------|-----------|-------|-----------|-------|-----------|-------|-----------|-------|
| PROP           | FAN TYPE | RPM  | HP | CFM       | BHP   | CFM       | BHP   | CFM       | BHP   | CFM       | BHP   | CFM       | BHP   | CFM       | BHP   |
| 29T734         | VTBD     | 816  | 1  | 8293      | 0.949 | 7023      | 1.01  |           |       |           |       |           |       |           |       |
| 29T734         | VTBD     | 934  | 1½ | 9798      | 1.39  | 8784      | 1.49  | 7461      | 1.50  |           |       |           |       |           |       |
| 29T734         | VTBD     | 1028 | 2  | 10972     | 1.83  | 10073     | 1.94  | 9051      | 2.01  | 7559      | 1.94  |           |       |           |       |
| 29T734         | VTBD     | 1177 | 3  | 12798     | 2.72  | 12025     | 2.84  | 11221     | 2.96  | 10295     | 3.02  | 9068      | 2.96  |           |       |
| 29T734         | VTBD     | 1395 | 5  | 15425     | 4.47  | 14786     | 4.61  | 14126     | 4.75  | 13450     | 4.90  | 12707     | 5.01  | 11866     | 5.03  |
| 29T734         | VTBD     | 1597 | 7½ | 17829     | 6.65  | 17277     | 6.81  | 16710     | 6.97  | 16132     | 7.14  | 15544     | 7.32  | 14921     | 7.47  |
| 29T734         | VTBD     | 1758 | 10 | 19731     | 8.83  | 19233     | 9.01  | 18724     | 9.19  | 18204     | 9.37  | 17678     | 9.56  | 17143     | 9.75  |
| 29T734         | VTBD     | 2012 | 15 | 22715     | 13.17 | 22283     | 13.38 | 21844     | 13.59 | 21397     | 13.79 | 20943     | 13.99 | 20484     | 14.20 |
| 29T734         | VTBD     | 2214 | 20 | 25077     | 17.51 | 24686     | 17.73 | 24290     | 17.96 | 23888     | 18.19 | 23481     | 18.41 | 23069     | 18.63 |
| CATALOG NUMBER |          |      |    | 2.000" SP |       | 2.500" SP |       | 3.000" SP |       | 3.500" SP |       | 4.000" SP |       | 4.500" SP |       |
| PROP           | FAN TYPE | RPM  | HP | CFM       | BHP   | CFM       | BHP   | CFM       | BHP   | CFM       | BHP   | CFM       | BHP   | CFM       | BHP   |
| 29T734         | VTBD     | 816  | 1  |           |       |           |       |           |       |           |       |           |       |           |       |
| 29T734         | VTBD     | 934  | 1½ |           |       |           |       |           |       |           |       |           |       |           |       |
| 29T734         | VTBD     | 1028 | 2  |           |       |           |       |           |       |           |       |           |       |           |       |
| 29T734         | VTBD     | 1177 | 3  |           |       |           |       |           |       |           |       |           |       |           |       |
| 29T734         | VTBD     | 1395 | 5  |           |       |           |       |           |       |           |       |           |       |           |       |
| 29T734         | VTBD     | 1597 | 7½ | 13473     | 7.55  |           |       |           |       |           |       |           |       |           |       |
| 29T734         | VTBD     | 1758 | 10 | 15977     | 10.04 | 14594     | 10.05 |           |       |           |       |           |       |           |       |
| 29T734         | VTBD     | 2012 | 15 | 19553     | 14.64 | 18546     | 15.00 | 17413     | 15.11 | 16009     | 14.95 |           |       |           |       |
| 29T734         | VTBD     | 2214 | 20 | 22234     | 19.10 | 21380     | 19.59 | 20462     | 19.97 | 19447     | 20.13 | 18290     | 20.06 | 16807     | 19.63 |

# Performance Data – Vaneaxial

## Size 33 VTBD Belt Driven Type T Vaneaxial

| CATALOG NUMBER |          |      |    | 0.250" SP |       | 0.500" SP |       | 0.750" SP |       | 1.000" SP |       | 1.250" SP |       | 1.500" SP |        |
|----------------|----------|------|----|-----------|-------|-----------|-------|-----------|-------|-----------|-------|-----------|-------|-----------|--------|
| PROP           | FAN TYPE | RPM  | HP | CFM       | BHP   | CFM       | BHP   | CFM       | BHP   | CFM       | BHP   | CFM       | BHP   | CFM       | BHP    |
| 33T734         | VTBD     | 829  | 2  | 12840     | 1.86  | 11545     | 1.98  | 9893      | 2.00  |           |       |           |       |           |        |
| 33T734         | VTBD     | 949  | 3  | 15035     | 2.74  | 13934     | 2.89  | 12733     | 3.01  | 11191     | 3.00  |           |       |           |        |
| 33T734         | VTBD     | 1125 | 5  | 18188     | 4.50  | 17277     | 4.66  | 16339     | 4.84  | 15333     | 5.00  | 14168     | 5.04  | 12617     | 4.92   |
| 33T734         | VTBD     | 1287 | 7½ | 21047     | 6.67  | 20262     | 6.86  | 19453     | 7.06  | 18630     | 7.26  | 17760     | 7.45  | 16787     | 7.54   |
| 33T734         | VTBD     | 1417 | 10 | 23322     | 8.86  | 22615     | 9.07  | 21889     | 9.28  | 21148     | 9.50  | 20397     | 9.73  | 19605     | 9.93   |
| 33T734         | VTBD     | 1622 | 15 | 26885     | 13.21 | 26272     | 13.45 | 25648     | 13.70 | 25011     | 13.94 | 24364     | 14.19 | 23713     | 14.45  |
| 33T734         | VTBD     | 1785 | 20 | 29703     | 17.55 | 29149     | 17.82 | 28586     | 18.09 | 28015     | 18.35 | 27433     | 18.62 | 26845     | 18.89  |
| 33T734         | VTBD     | 1923 | 25 | 32081     | 21.89 | 31569     | 22.18 | 31049     | 22.47 | 30523     | 22.76 | 29989     | 23.05 | 29447     | 23.34  |
| 33T734         | VTBD     | 2044 | 30 | 34162     | 26.25 | 33681     | 26.56 | 33194     | 26.87 | 32701     | 27.18 | 32203     | 27.48 | 31698     | 27.793 |
| CATALOG NUMBER |          |      |    | 2.000" SP |       | 2.500" SP |       | 3.000" SP |       | 3.500" SP |       | 4.000" SP |       | 4.500" SP |        |
| PROP           | FAN TYPE | RPM  | HP | CFM       | BHP   | CFM       | BHP   | CFM       | BHP   | CFM       | BHP   | CFM       | BHP   | CFM       | BHP    |
| 33T734         | VTBD     | 829  | 2  |           |       |           |       |           |       |           |       |           |       |           |        |
| 33T734         | VTBD     | 949  | 3  |           |       |           |       |           |       |           |       |           |       |           |        |
| 33T734         | VTBD     | 1125 | 5  |           |       |           |       |           |       |           |       |           |       |           |        |
| 33T734         | VTBD     | 1287 | 7½ | 14180     | 7.31  |           |       |           |       |           |       |           |       |           |        |
| 33T734         | VTBD     | 1417 | 10 | 17776     | 10.07 | 14973     | 9.58  |           |       |           |       |           |       |           |        |
| 33T734         | VTBD     | 1622 | 15 | 22341     | 14.92 | 20768     | 15.11 | 18764     | 14.89 |           |       |           |       |           |        |
| 33T734         | VTBD     | 1785 | 20 | 25654     | 19.47 | 24376     | 19.95 | 22939     | 20.13 | 21208     | 19.97 |           |       |           |        |
| 33T734         | VTBD     | 1923 | 25 | 28353     | 23.94 | 27229     | 24.55 | 26008     | 25.01 | 24661     | 25.17 | 23081     | 25.02 | 21009     | 24.31  |
| 33T734         | VTBD     | 2044 | 30 | 30672     | 28.41 | 29635     | 29.07 | 28554     | 29.69 | 27373     | 30.09 | 26090     | 30.23 | 24599     | 30.07  |

## Size 38 VTBD Belt Driven Type T Vaneaxial

| CATALOG NUMBER |          |      |    | 0.250" SP |       | 0.500" SP |       | 0.750" SP |       | 1.000" SP |       | 1.250" SP |       | 1.500" SP |       |
|----------------|----------|------|----|-----------|-------|-----------|-------|-----------|-------|-----------|-------|-----------|-------|-----------|-------|
| PROP           | FAN TYPE | RPM  | HP | CFM       | BHP   | CFM       | BHP   | CFM       | BHP   | CFM       | BHP   | CFM       | BHP   | CFM       | BHP   |
| 38T734         | VTBD     | 645  | 2  | 14889     | 1.89  | 13081     | 1.98  |           |       |           |       |           |       |           |       |
| 38T734         | VTBD     | 739  | 3  | 17515     | 2.79  | 16020     | 2.93  | 14323     | 3.01  |           |       |           |       |           |       |
| 38T734         | VTBD     | 876  | 5  | 21248     | 4.56  | 20026     | 4.77  | 18738     | 4.90  | 17306     | 4.99  | 15524     | 5.03  |           |       |
| 38T734         | VTBD     | 1003 | 7½ | 24649     | 6.76  | 23603     | 7.03  | 22513     | 7.23  | 21376     | 7.37  | 20131     | 7.47  | 18762     | 7.55  |
| 38T734         | VTBD     | 1104 | 10 | 27327     | 8.94  | 26388     | 9.25  | 25414     | 9.51  | 24411     | 9.71  | 23363     | 9.84  | 22225     | 9.96  |
| 38T734         | VTBD     | 1263 | 15 | 31512     | 13.27 | 30700     | 13.64 | 29867     | 13.97 | 29010     | 14.26 | 28135     | 14.49 | 27235     | 14.66 |
| 38T734         | VTBD     | 1390 | 20 | 34833     | 17.60 | 34101     | 18.02 | 33353     | 18.40 | 32588     | 18.75 | 31805     | 19.06 | 31009     | 19.30 |
| 38T734         | VTBD     | 1498 | 25 | 37648     | 21.95 | 36972     | 22.41 | 36283     | 22.84 | 35581     | 23.23 | 34865     | 23.59 | 34134     | 23.91 |
| CATALOG NUMBER |          |      |    | 2.000" SP |       | 2.500" SP |       | 3.000" SP |       | 3.500" SP |       | 4.000" SP |       | 4.500" SP |       |
| PROP           | FAN TYPE | RPM  | HP | CFM       | BHP   | CFM       | BHP   | CFM       | BHP   | CFM       | BHP   | CFM       | BHP   | CFM       | BHP   |
| 38T734         | VTBD     | 645  | 2  |           |       |           |       |           |       |           |       |           |       |           |       |
| 38T734         | VTBD     | 739  | 3  |           |       |           |       |           |       |           |       |           |       |           |       |
| 38T734         | VTBD     | 876  | 5  |           |       |           |       |           |       |           |       |           |       |           |       |
| 38T734         | VTBD     | 1003 | 7½ |           |       |           |       |           |       |           |       |           |       |           |       |
| 38T734         | VTBD     | 1104 | 10 | 19454     | 10.05 |           |       |           |       |           |       |           |       |           |       |
| 38T734         | VTBD     | 1263 | 15 | 25276     | 14.93 | 22992     | 15.09 |           |       |           |       |           |       |           |       |
| 38T734         | VTBD     | 1390 | 20 | 29351     | 19.65 | 27527     | 19.94 | 25446     | 20.11 |           |       |           |       |           |       |
| 38T734         | VTBD     | 1498 | 25 | 32641     | 24.38 | 31052     | 24.71 | 29327     | 25.01 | 27350     | 25.17 | 23999     | 24.62 |           |       |

# Performance Data – Vaneaxial

## Size 43 VTBD Belt Driven Type T Vaneaxial

| CATALOG NUMBER |          |      |    | 0.250" SP |       | 0.500" SP |       | 0.750" SP |       | 1.000" SP |       | 1.250" SP |       | 1.500" SP |       |
|----------------|----------|------|----|-----------|-------|-----------|-------|-----------|-------|-----------|-------|-----------|-------|-----------|-------|
| PROP           | FAN TYPE | RPM  | HP | CFM       | BHP   | CFM       | BHP   | CFM       | BHP   | CFM       | BHP   | CFM       | BHP   | CFM       | BHP   |
| 43T734         | VTBD     | 526  | 2  | 17242     | 1.93  | 14612     | 2.02  |           |       |           |       |           |       |           |       |
| 43T734         | VTBD     | 603  | 3  | 20411     | 2.85  | 18285     | 2.98  | 15614     | 3.04  |           |       |           |       |           |       |
| 43T734         | VTBD     | 714  | 5  | 24847     | 4.62  | 23128     | 4.85  | 21263     | 4.97  | 19084     | 5.06  |           |       |           |       |
| 43T734         | VTBD     | 818  | 7½ | 28917     | 6.85  | 27449     | 7.15  | 25913     | 7.36  | 24250     | 7.49  | 22400     | 7.59  | 19597     | 7.50  |
| 43T734         | VTBD     | 900  | 10 | 32088     | 9.05  | 30772     | 9.40  | 29401     | 9.67  | 27976     | 9.86  | 26425     | 9.99  | 24742     | 10.11 |
| 43T734         | VTBD     | 1030 | 15 | 37070     | 13.42 | 35937     | 13.85 | 34767     | 14.22 | 33562     | 14.52 | 32322     | 14.73 | 31010     | 14.90 |
| 43T734         | VTBD     | 1134 | 20 | 41028     | 17.80 | 40007     | 18.29 | 38959     | 18.73 | 37883     | 19.11 | 36783     | 19.42 | 35655     | 19.65 |
| 43T734         | VTBD     | 1222 | 25 | 44362     | 22.19 | 43420     | 22.73 | 42456     | 23.22 | 41471     | 23.66 | 40462     | 24.04 | 39437     | 24.35 |
| 43T734         | VTBD     | 1298 | 30 | 47233     | 26.52 | 46349     | 27.09 | 45448     | 27.63 | 44529     | 28.12 | 43590     | 28.56 | 42634     | 28.94 |
| 43T734         | VTBD     | 1429 | 40 | 52169     | 35.24 | 51370     | 35.89 | 50558     | 36.50 | 49733     | 37.07 | 48895     | 37.60 | 48041     | 38.08 |
| CATALOG NUMBER |          |      |    | 2.000" SP |       | 2.500" SP |       | 3.000" SP |       | 3.500" SP |       | 4.000" SP |       | 4.500" SP |       |
| PROP           | FAN TYPE | RPM  | HP | CFM       | BHP   | CFM       | BHP   | CFM       | BHP   | CFM       | BHP   | CFM       | BHP   | CFM       | BHP   |
| 43T734         | VTBD     | 526  | 2  |           |       |           |       |           |       |           |       |           |       |           |       |
| 43T734         | VTBD     | 603  | 3  |           |       |           |       |           |       |           |       |           |       |           |       |
| 43T734         | VTBD     | 714  | 5  |           |       |           |       |           |       |           |       |           |       |           |       |
| 43T734         | VTBD     | 818  | 7½ |           |       |           |       |           |       |           |       |           |       |           |       |
| 43T734         | VTBD     | 900  | 10 |           |       |           |       |           |       |           |       |           |       |           |       |
| 43T734         | VTBD     | 1030 | 15 | 28087     | 15.16 |           |       |           |       |           |       |           |       |           |       |
| 43T734         | VTBD     | 1134 | 20 | 33215     | 20.00 | 30456     | 20.26 |           |       |           |       |           |       |           |       |
| 43T734         | VTBD     | 1222 | 25 | 37296     | 24.79 | 34940     | 25.15 | 32211     | 25.35 |           |       |           |       |           |       |
| 43T734         | VTBD     | 1298 | 30 | 40672     | 29.50 | 38560     | 29.90 | 36274     | 30.26 | 33432     | 30.34 |           |       |           |       |
| 43T734         | VTBD     | 1429 | 40 | 46298     | 38.87 | 44497     | 39.43 | 42573     | 39.87 | 40518     | 40.28 | 38224     | 40.54 | 34948     | 40.19 |

## Size 48 VTBD Belt Driven Type T Vaneaxial

| CATALOG NUMBER |          |      |    | 0.250" SP |       | 0.500" SP |       | 0.750" SP |       | 1.000" SP |       | 1.250" SP |       | 1.500" SP |       |
|----------------|----------|------|----|-----------|-------|-----------|-------|-----------|-------|-----------|-------|-----------|-------|-----------|-------|
| PROP           | FAN TYPE | RPM  | HP | CFM       | BHP   | CFM       | BHP   | CFM       | BHP   | CFM       | BHP   | CFM       | BHP   | CFM       | BHP   |
| 48T734         | VTBD     | 503  | 3  | 23320     | 2.89  | 20368     | 3.03  |           |       |           |       |           |       |           |       |
| 48T734         | VTBD     | 596  | 5  | 28555     | 4.70  | 26224     | 4.93  | 23603     | 5.06  | 19634     | 5.02  |           |       |           |       |
| 48T734         | VTBD     | 682  | 7½ | 33278     | 6.93  | 31289     | 7.26  | 29186     | 7.45  | 26832     | 7.59  | 23696     | 7.60  |           |       |
| 48T734         | VTBD     | 751  | 10 | 37015     | 9.17  | 35237     | 9.56  | 33379     | 9.84  | 31397     | 10.01 | 29206     | 10.16 | 26333     | 10.16 |
| 48T734         | VTBD     | 859  | 15 | 42803     | 13.56 | 41276     | 14.05 | 39689     | 14.45 | 38055     | 14.74 | 36334     | 14.94 | 34465     | 15.12 |
| 48T734         | VTBD     | 946  | 20 | 47428     | 17.99 | 46054     | 18.55 | 44637     | 19.03 | 43178     | 19.43 | 41683     | 19.72 | 40118     | 19.94 |
| 48T734         | VTBD     | 1019 | 25 | 51289     | 22.39 | 50021     | 23.00 | 48720     | 23.54 | 47383     | 24.02 | 46017     | 24.41 | 44618     | 24.70 |
| 48T734         | VTBD     | 1083 | 30 | 54663     | 26.79 | 53474     | 27.45 | 52260     | 28.05 | 51016     | 28.58 | 49743     | 29.05 | 48449     | 29.42 |
| 48T734         | VTBD     | 1192 | 40 | 60389     | 35.56 | 59316     | 36.30 | 58223     | 36.99 | 57109     | 37.62 | 55973     | 38.20 | 54815     | 38.71 |
| 48T734         | VTBD     | 1284 | 50 | 65209     | 44.31 | 64216     | 45.12 | 63208     | 45.88 | 62183     | 46.59 | 61141     | 47.25 | 60082     | 47.86 |
| 48T734         | VTBD     | 1364 | 60 | 69390     | 53.00 | 68458     | 53.87 | 67514     | 54.69 | 66555     | 55.47 | 65583     | 56.20 | 64596     | 56.88 |
| CATALOG NUMBER |          |      |    | 2.000" SP |       | 2.500" SP |       | 3.000" SP |       | 3.500" SP |       | 4.000" SP |       | 4.500" SP |       |
| PROP           | FAN TYPE | RPM  | HP | CFM       | BHP   | CFM       | BHP   | CFM       | BHP   | CFM       | BHP   | CFM       | BHP   | CFM       | BHP   |
| 48T734         | VTBD     | 503  | 3  |           |       |           |       |           |       |           |       |           |       |           |       |
| 48T734         | VTBD     | 596  | 5  |           |       |           |       |           |       |           |       |           |       |           |       |
| 48T734         | VTBD     | 682  | 7½ |           |       |           |       |           |       |           |       |           |       |           |       |
| 48T734         | VTBD     | 751  | 10 |           |       |           |       |           |       |           |       |           |       |           |       |
| 48T734         | VTBD     | 859  | 15 | 29611     | 15.17 |           |       |           |       |           |       |           |       |           |       |
| 48T734         | VTBD     | 946  | 20 | 36667     | 20.31 | 31523     | 20.12 |           |       |           |       |           |       |           |       |
| 48T734         | VTBD     | 1019 | 25 | 41594     | 25.14 | 38189     | 25.47 |           |       |           |       |           |       |           |       |
| 48T734         | VTBD     | 1083 | 30 | 45735     | 29.95 | 42744     | 30.39 | 39145     | 30.57 |           |       |           |       |           |       |
| 48T734         | VTBD     | 1192 | 40 | 52448     | 39.47 | 49935     | 40.01 | 47206     | 40.50 | 44126     | 40.79 | 39267     | 40.13 |           |       |
| 48T734         | VTBD     | 1284 | 50 | 57917     | 48.86 | 55683     | 49.56 | 53299     | 50.12 | 50750     | 50.63 | 47928     | 50.97 | 43956     | 50.59 |
| 48T734         | VTBD     | 1364 | 60 | 62579     | 58.07 | 60516     | 58.97 | 58372     | 59.64 | 56075     | 60.21 | 53664     | 60.75 | 50997     | 61.10 |

# Performance Data – Vaneaxial

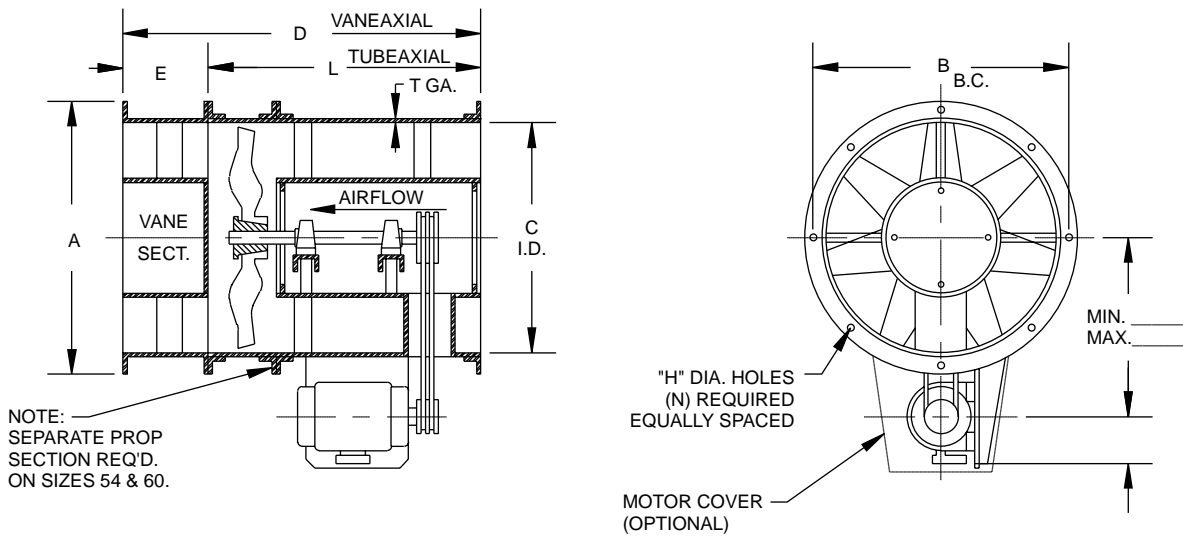
## Size 54 VTBD Belt Driven Type T Vaneaxial

| CATALOG NUMBER |          |     |    | 0.250" SP |       | 0.500" SP |       | 0.750" SP |       | 1.000" SP |       | 1.250" SP |       | 1.500" SP |       | 2.000" SP |       | 2.500" SP |       | 3.000" SP |       |
|----------------|----------|-----|----|-----------|-------|-----------|-------|-----------|-------|-----------|-------|-----------|-------|-----------|-------|-----------|-------|-----------|-------|-----------|-------|
| PROP           | FAN TYPE | RPM | HP | CFM       | BHP   | CFM       | BHP   | CFM       | BHP   | CFM       | BHP   | CFM       | BHP   | CFM       | BHP   | CFM       | BHP   | CFM       | BHP   | CFM       | BHP   |
| 54T734         | VTBD     | 412 | 3  | 26623     | 2.90  | 22346     | 3.03  |           |       |           |       |           |       |           |       |           |       |           |       |           |       |
| 54T734         | VTBD     | 488 | 5  | 32818     | 4.70  | 29540     | 4.93  | 25570     | 5.04  |           |       |           |       |           |       |           |       |           |       |           |       |
| 54T734         | VTBD     | 559 | 7½ | 38437     | 6.95  | 35672     | 7.29  | 32642     | 7.47  | 28997     | 7.58  |           |       |           |       |           |       |           |       |           |       |
| 54T734         | VTBD     | 615 | 10 | 42797     | 9.15  | 40322     | 9.57  | 37713     | 9.83  | 34808     | 10.02 | 31163     | 10.07 |           |       |           |       |           |       |           |       |
| 54T734         | VTBD     | 704 | 15 | 49638     | 13.54 | 47520     | 14.08 | 45312     | 14.50 | 43006     | 14.77 | 40480     | 14.98 | 37695     | 15.13 |           |       |           |       |           |       |
| 54T734         | VTBD     | 775 | 20 | 55041     | 17.93 | 53139     | 18.55 | 51167     | 19.08 | 49135     | 19.46 | 47010     | 19.74 | 44704     | 19.97 | 39038     | 20.14 |           |       |           |       |
| 54T734         | VTBD     | 835 | 25 | 59581     | 22.31 | 57828     | 23.00 | 56021     | 23.60 | 54159     | 24.10 | 52250     | 24.46 | 50246     | 24.73 | 45816     | 25.19 | 38722     | 24.78 |           |       |
| 54T734         | VTBD     | 887 | 30 | 63500     | 26.64 | 61858     | 27.39 | 60172     | 28.06 | 58438     | 28.64 | 56666     | 29.09 | 54843     | 29.43 | 50873     | 29.97 | 46222     | 30.28 |           |       |
| 54T734         | VTBD     | 977 | 40 | 70256     | 35.41 | 68776     | 36.26 | 67263     | 37.04 | 65716     | 37.74 | 64132     | 38.35 | 62523     | 38.85 | 59168     | 39.56 | 55478     | 40.13 | 51254     | 40.47 |

## Size 60 VTBD Belt Driven Type T Vaneaxial

| CATALOG NUMBER |          |     |    | 0.250" SP |       | 0.500" SP |       | 0.750" SP |       | 1.000" SP |       | 1.250" SP |       | 1.500" SP |       | 2.000" SP |       | 2.500" SP |       | 3.000" SP |       |
|----------------|----------|-----|----|-----------|-------|-----------|-------|-----------|-------|-----------|-------|-----------|-------|-----------|-------|-----------|-------|-----------|-------|-----------|-------|
| PROP           | FAN TYPE | RPM | HP | CFM       | BHP   | CFM       | BHP   | CFM       | BHP   | CFM       | BHP   | CFM       | BHP   | CFM       | BHP   | CFM       | BHP   | CFM       | BHP   | CFM       | BHP   |
| 60T734         | VTBD     | 413 | 5  | 37620     | 4.87  | 33189     | 5.10  | 26589     | 5.09  |           |       |           |       |           |       |           |       |           |       |           |       |
| 60T734         | VTBD     | 473 | 7½ | 44205     | 7.18  | 40527     | 7.53  | 36375     | 7.73  | 29257     | 7.55  |           |       |           |       |           |       |           |       |           |       |
| 60T734         | VTBD     | 520 | 10 | 49266     | 9.43  | 45981     | 9.89  | 42446     | 10.14 | 38386     | 10.32 |           |       |           |       |           |       |           |       |           |       |
| 60T734         | VTBD     | 596 | 15 | 57331     | 14.00 | 54527     | 14.60 | 51595     | 15.02 | 48454     | 15.29 | 44977     | 15.51 | 40237     | 15.47 |           |       |           |       |           |       |
| 60T734         | VTBD     | 656 | 20 | 63626     | 18.50 | 61111     | 19.21 | 58494     | 19.77 | 55783     | 20.15 | 52859     | 20.42 | 49697     | 20.67 |           |       |           |       |           |       |
| 60T734         | VTBD     | 706 | 25 | 68837     | 22.93 | 66519     | 23.72 | 64119     | 24.38 | 61646     | 24.88 | 59072     | 25.23 | 56286     | 25.52 | 49696     | 25.84 |           |       |           |       |
| 60T734         | VTBD     | 750 | 30 | 73402     | 27.38 | 71233     | 28.23 | 68997     | 28.97 | 66692     | 29.58 | 64330     | 30.02 | 61847     | 30.36 | 56354     | 30.92 | 47287     | 30.32 |           |       |
| 60T734         | VTBD     | 826 | 40 | 81252     | 36.36 | 79298     | 37.33 | 77295     | 38.20 | 75239     | 38.97 | 73137     | 39.6  | 70990     | 40.08 | 66378     | 40.80 | 61242     | 41.36 | 53178     | 40.75 |

# Dimensional Data



NOTE: FLANGED HOUSING CONSTRUCTION IS STANDARD ON STEEL FANS SIZES 15" THROUGH 33", ANGLE RING CONSTRUCTION IS STANDARD ON STEEL FANS SIZES 12" AND 38" THROUGH 60", AND ON ALL SIZES OF ALUMINUM CONSTRUCTION.

| SIZE | DIMENSIONS                       |                                  |                                 |                                |                                |                              |    |    |     |
|------|----------------------------------|----------------------------------|---------------------------------|--------------------------------|--------------------------------|------------------------------|----|----|-----|
|      | A                                | B                                | C                               | D                              | E                              | H                            | L  | N  | T   |
| 12   | 14 <sup>3</sup> / <sub>4</sub>   | 13 <sup>5</sup> / <sub>8</sub>   | 12                              | 26                             | 6                              | <sup>3</sup> / <sub>8</sub>  | 20 | 8  | 10  |
| 15   | 17 <sup>3</sup> / <sub>4</sub>   | 16 <sup>5</sup> / <sub>8</sub>   | 15                              | 26                             | 6                              | <sup>3</sup> / <sub>8</sub>  | 20 | 8  | 10  |
| 18   | 21 <sup>7</sup> / <sub>16</sub>  | 20                               | 18 <sup>3</sup> / <sub>16</sub> | 30                             | 6                              | <sup>7</sup> / <sub>16</sub> | 24 | 8  | 10  |
| 22   | 25 <sup>7</sup> / <sub>16</sub>  | 24                               | 22 <sup>3</sup> / <sub>16</sub> | 32                             | 8                              | <sup>7</sup> / <sub>16</sub> | 24 | 8  | 10  |
| 25   | 28 <sup>9</sup> / <sub>16</sub>  | 27 <sup>1</sup> / <sub>8</sub>   | 25 <sup>5</sup> / <sub>16</sub> | 42 <sup>1</sup> / <sub>2</sub> | 10 <sup>1</sup> / <sub>2</sub> | <sup>7</sup> / <sub>16</sub> | 32 | 8  | 10  |
| 29   | 32 <sup>9</sup> / <sub>16</sub>  | 31 <sup>3</sup> / <sub>16</sub>  | 29 <sup>3</sup> / <sub>16</sub> | 47                             | 11                             | <sup>7</sup> / <sub>16</sub> | 36 | 16 | 7   |
| 33   | 37 <sup>11</sup> / <sub>16</sub> | 35 <sup>1</sup> / <sub>4</sub>   | 33 <sup>5</sup> / <sub>16</sub> | 51                             | 15                             | <sup>7</sup> / <sub>16</sub> | 36 | 16 | 7   |
| 38   | 42 <sup>11</sup> / <sub>16</sub> | 40 <sup>1</sup> / <sub>4</sub>   | 38 <sup>5</sup> / <sub>16</sub> | 57                             | 15                             | <sup>7</sup> / <sub>16</sub> | 42 | 16 | 7   |
| 43   | 47 <sup>3</sup> / <sub>4</sub>   | 45 <sup>5</sup> / <sub>16</sub>  | 43 <sup>3</sup> / <sub>8</sub>  | 61                             | 19                             | <sup>7</sup> / <sub>16</sub> | 42 | 16 | 7   |
| 48   | 52 <sup>15</sup> / <sub>16</sub> | 50 <sup>13</sup> / <sub>16</sub> | 48 <sup>9</sup> / <sub>16</sub> | 67                             | 19                             | <sup>7</sup> / <sub>16</sub> | 48 | 16 | 7   |
| 54   | 59                               | 56 <sup>13</sup> / <sub>16</sub> | 54 <sup>1</sup> / <sub>2</sub>  | 84                             | 24                             | <sup>7</sup> / <sub>16</sub> | 60 | 24 | 1/4 |
| 60   | 65                               | 62 <sup>13</sup> / <sub>16</sub> | 60 <sup>1</sup> / <sub>2</sub>  | 84                             | 24                             | <sup>7</sup> / <sub>16</sub> | 60 | 24 | 1/4 |

# Typical Specifications

Fans, where indicated on drawings and schedules, shall be Model TTABD Belt Driven Type T Tubeaxial or Model VTBD Belt Driven Type T Vaneaxial, arrangement 9, as manufactured by Aerovent, Minneapolis, Minnesota, and shall be of the size and capacity as indicated in the fan schedule. Fans shall be tested and certified in accordance with ANSI/ASHRAE 51-1985 and ANSI/AMCA 210-85 test codes and guaranteed by the manufacturer to deliver at the rated published performance levels. In addition, each unit shall be factory run tested prior to shipment.

**CONSTRUCTION** — Fan casings shall be welded of 10 gauge hot rolled steel in sizes through 22" diameter, 7 gauge hot rolled steel from 29" through 43" diameter, and 1/4" plate hot rolled steel on sizes 48" diameter and larger. Inlet and outlet flanges shall be of welded angle ring construction on fan casings through 15" diameter and fan casings of 54" and 60" diameter. Inlet and outlet flanges on 18" through 48" diameter shall be integrally rolled from fan casing sheet steel to ensure concentricity and alignment of flanges. Concentricity of fan casings shall be insured through the use of welding jigs and fixtures. The motor base shall be fabricated of minimum 3/16" steel plate and welded to the exterior of the fan casing. The adjustment of belt tension shall be accomplished with an adjustable slide rail base.

Fan casings shall be fitted with mounting legs for horizontal floor support, horizontal clips for ceiling suspension, vertical clips for floor or ceiling suspension, or flange mounted for direct duct connection as shown on drawings. Fan mounting supports shall be fabricated from hot rolled steel and shall be suitably braced to insure stability and rigidity.

**PROPELLER** — The propeller shall be cast from A319 aluminum, and shall have seven airfoil blades and a malleable iron split-taper bushing for mounting to the fan shaft. The blade angle setting shall be 34 degrees at a 0.75 radius. Fans shall have the propeller mounted on a separate shaft and bearings in an enclosed tube.

**GUIDE VANES** — Removable fan discharge guide vane sections shall be furnished where specified. Guide vane sections shall be designed to provide for maximum efficiency and straightening of the airflow. A quantity of eleven (11) accurately die-formed stationary guide vanes of 14-gauge hot rolled steel in sizes through 48" diameter, and 10-gauge hot rolled steel in sizes 54" and 60" diameter shall be welded inside the fan housing downstream of the propeller to straighten the airflow and insure optimum fan performance.

**BEARINGS** — All fans shall be supplied with sealed pillow block bearings with grease lines brought to the outside of the fan casing to facilitate servicing. Bearings shall have a minimum L-10 life as defined by AFBMA of at least 20,000 hours (100,000 hours average life).

**DRIVE** — Sheaves shall be cast iron with static conducting belts. Bearings and belts are enclosed in an air insulated housing for protection and shall utilize V-belt drives with a 1.3 safety factor. An OSHA-type belt guard shall be provided for personnel protection.

**MOTOR** — Fan motors shall be foot mounted NEMA Design B, standard industrial continuous duty, ball bearing (ODP, TEAO, TEFC, FCXP) variable torque type suitable for operation on voltage, phase, and hertz, as listed in the fan schedule.

**BALANCING** — The propeller assembly shall be statically and dynamically balanced in accordance with ANSI/AMCA 204-96 "Balance Quality and Vibration Levels for Fans" to Fan Application Category BV-3, Balance Quality Grade G6.3. In addition, belt driven fan propellers shall be balanced on the fan shaft after final assembly in the fan casing, in the manufacturing facility, to the following peak velocity values, filter-in, at the fan test speed:

| Fan Application Category | Rigidly Mounted - (in./s) | Flexibly Mounted - (in./s) |
|--------------------------|---------------------------|----------------------------|
| BV-3                     | 0.15                      | 0.20                       |

**FINISH** — The unit, after fabrication, shall be cleaned and chemically pretreated by a phosphatizing process and shall be painted inside and outside with an air dry enamel. Fan shall be coated with the following optional finish:

- Air Dry Epoxy
- Epoxy Phenolic
- Farboil - Baked Aromatic Epoxy
- Plastite 4310 - Vinyl Ester
- Plastite 3070 - Baked Phenolic
- Plastite 7122/Heresite VR506 - Epoxy Phenolic
- Carbocoat 30 (Replaces Sanitile 550 and Eisenheiss 210)

**ACCESSORIES** — Unit shall be complete with:

- Bolted Inspection Door
- Spark Resistant Construction Type A
- OSHA Inlet Guard
- Propeller Access Section
- Spark Resistant Construction Type B/C
- OSHA Outlet Guard
- Swingout Construction
- Stack Cap [Steel] [Aluminum] [304 SS] [316 SS]
- Motor Cover
- Clamshell Construction
- Curb Base [Steel] [Aluminum] [304 SS] [316 SS]
- Shaft Seal
- Support Legs
- Companion Flanges [Steel] [Aluminum] [304 SS] [316 SS]
- Inlet Bell
- Horizontal Ceiling Clips
- Floor Mounted Vibration Isolators [RIS] [Spring]
- Cone - Inlet
- Vertical Mounting Clips
- Ceiling Mounted Vibration Isolators [RIS] [Spring]
- Cone - Outlet
- Vertical Support Section