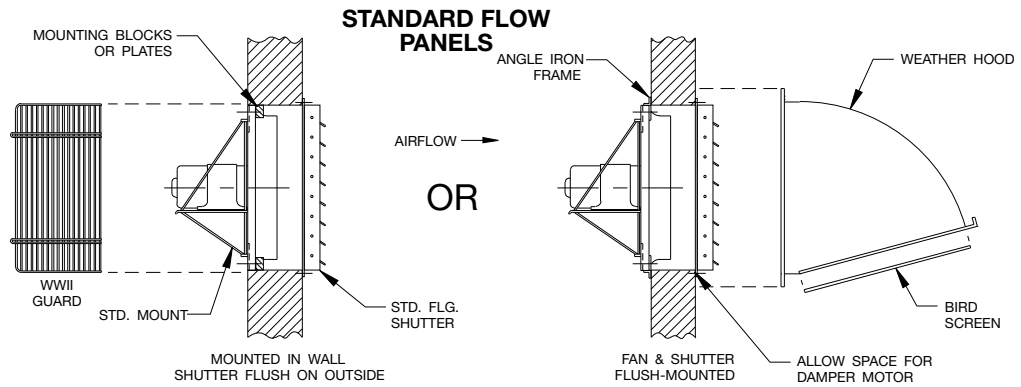


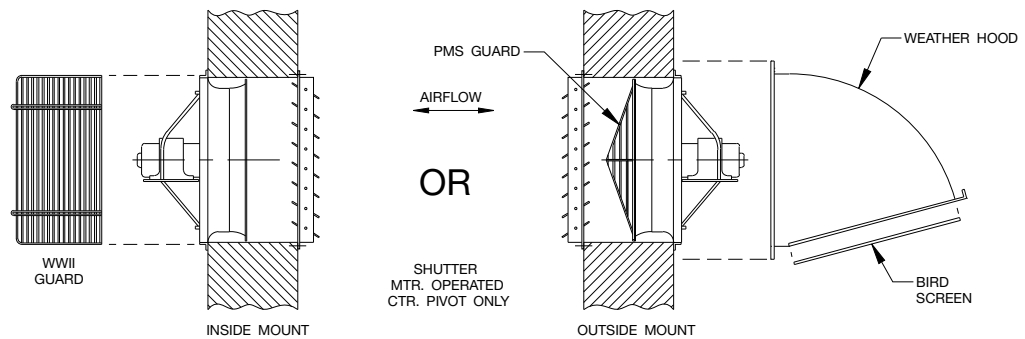
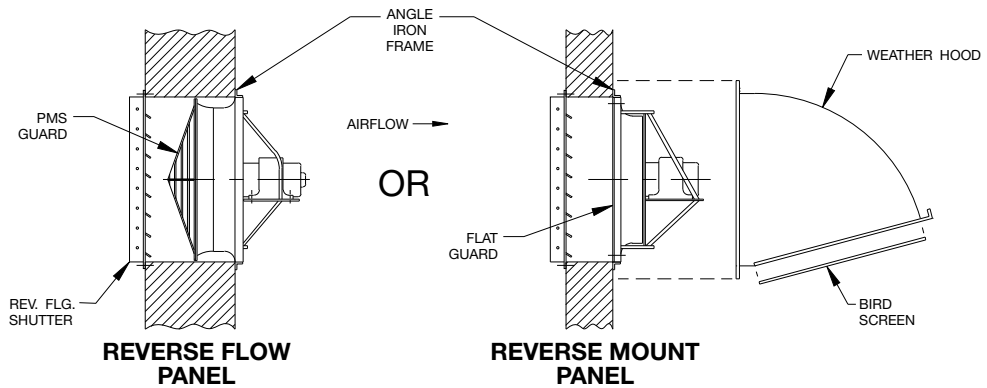
## Panel and Ring Fans

### Typical Panel Fan Installations

#### EXHAUST INSTALLATIONS

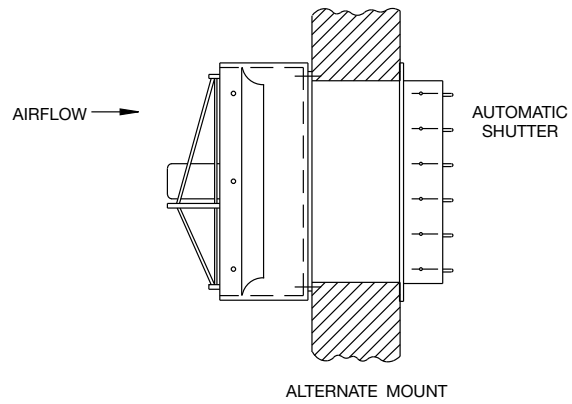
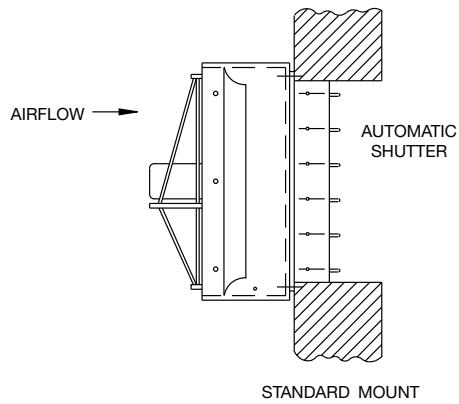


INSTALLATION REQUIRES SHUTTER SIZE TO BE SAME AS PANEL SQUARE.

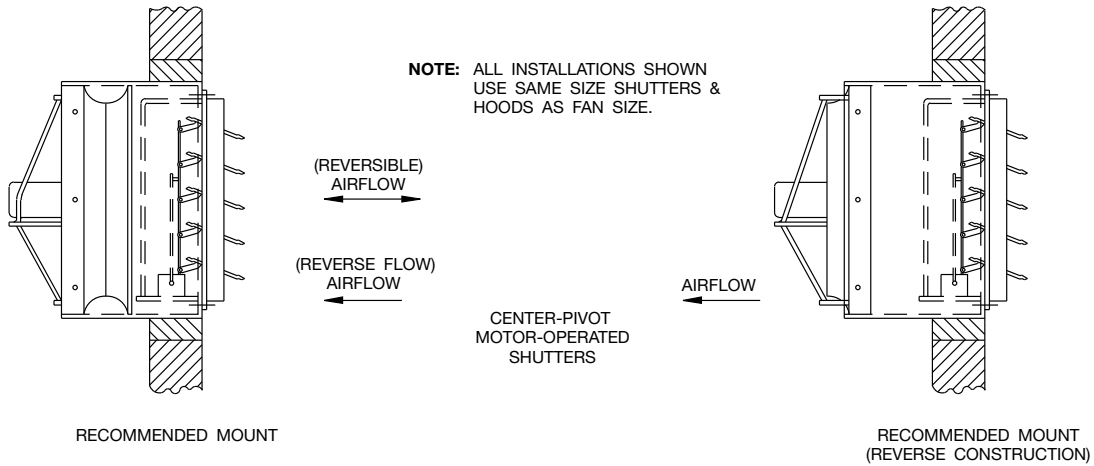


#### REVERSIBLE PANELS

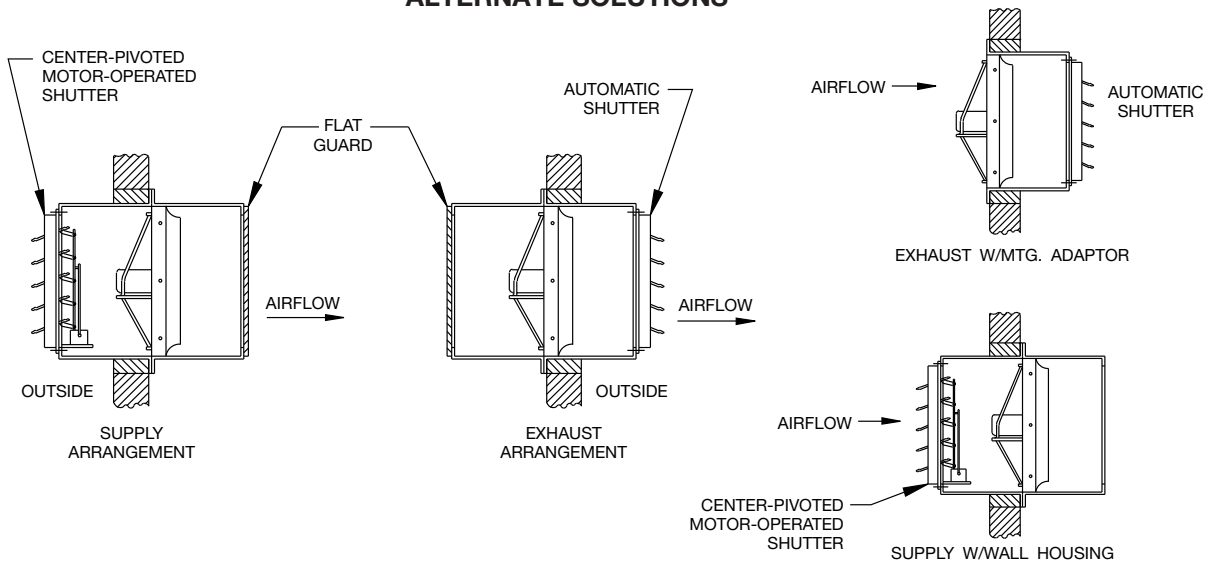
## INSTALLATIONS USING MOUNTING ADAPTORS



### STANDARD CONSTRUCTION

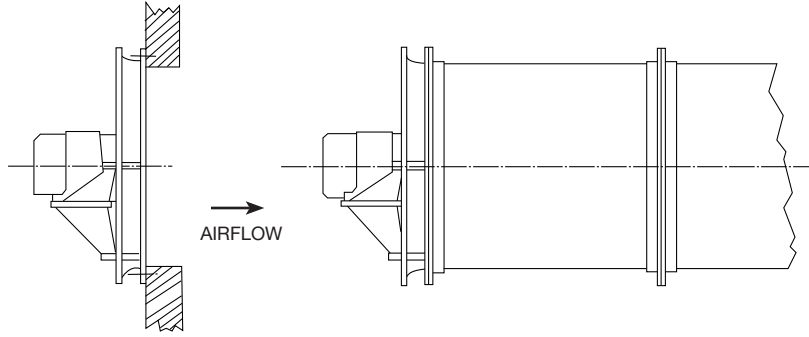


### ALTERNATE SOLUTIONS



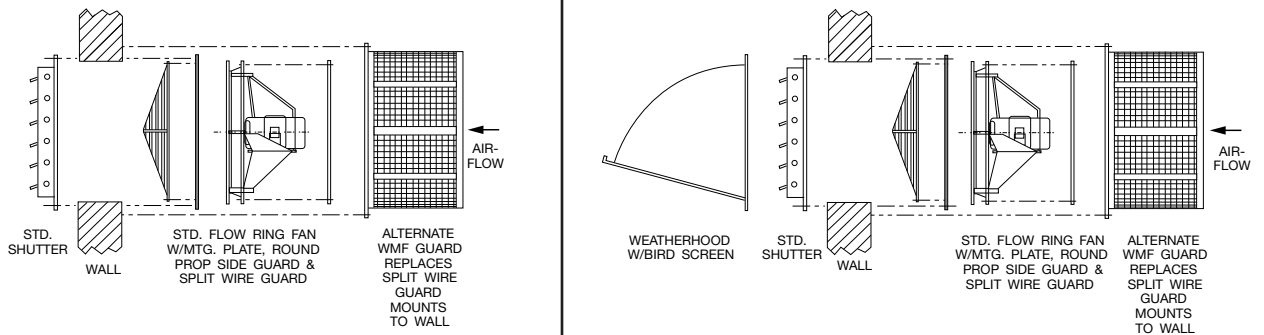
# Typical Ring Fan Installations

## STANDARD FLOW

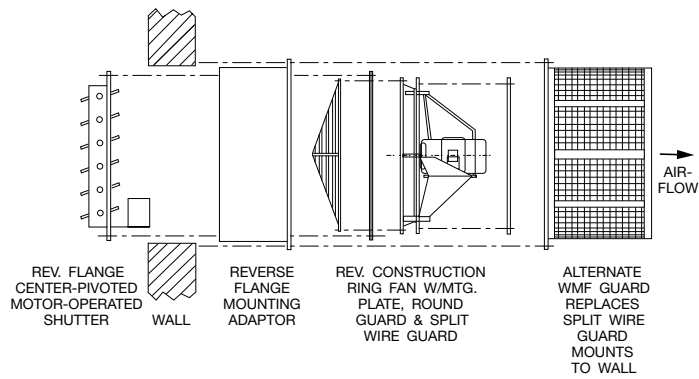


FAN MOUNTED  
FLUSH TO WALL

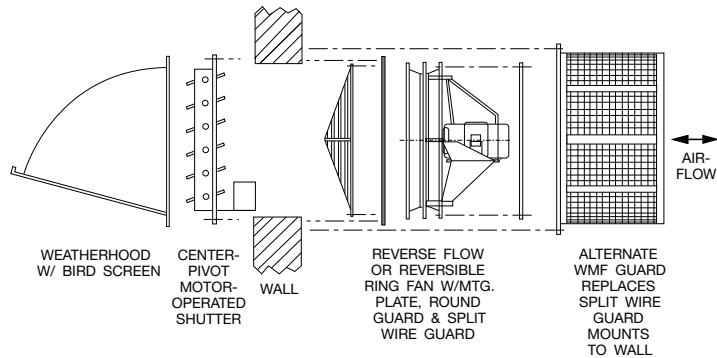
FAN MOUNTED  
TO DUCTWORK



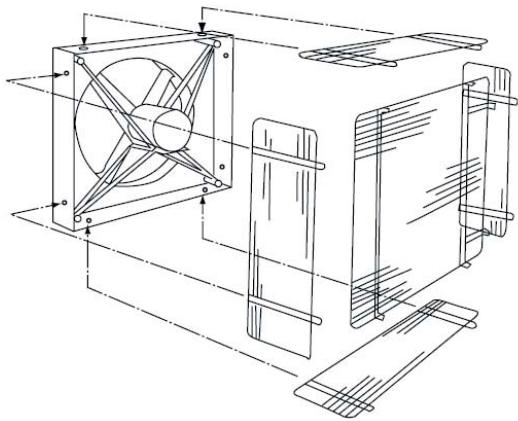
## REVERSE CONSTRUCTION



## REVERSE FLOW OR REVERSIBLE



## Rear Wire Guard (WWII)(Motorside) For Panel Fans



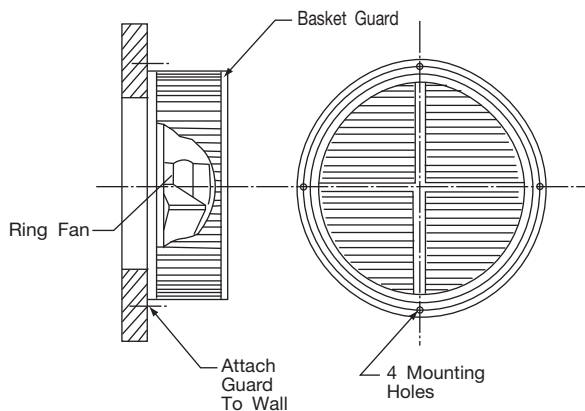
### PARTS

- (1) Rear Panel
- (4) Side Panels
- (16) or (24) Hex Head Locknuts
- (16) or (24)  $\frac{5}{16}$ " x 1" Hex Head Capscrews
- (32) or (48)  $\frac{3}{8}$ " I.D. Flat Washers

### ASSEMBLY

1. Bolt three sides of guard to rear panel using  $\frac{5}{16}$ " capscrews, nuts and flat washers.
2. Bolt partially assembled guard to panel fan using capscrews, nuts and flat washers.
3. Arrange for electrical hook-up to fan motor. Two methods may be used:
  - a. Drill out hole in fan panel and route wire or conduit through opening.

### Round Motorside Basket Guard



**CAUTION:** Recommended distance between fan blade and shutter is approximately equal to  $\frac{1}{3}$  of the fan's diameter.

- OR -

- b. Bend or cut side panel wire guard and route wire or conduit through opening.
4. Assemble fourth side to guard and panel, sliding along conduit or wiring if routing through guard.
5. Securely tighten all locknuts.

## Cleaning Propellers

The propeller in an axial flow fan must be kept reasonably clean if it is to perform properly. Fans handling fresh air for ventilating purposes will seldom need cleaning. Fans exhausting process air should be cleaned as required. Dirt or chemical deposits will usually build up on a propeller evenly and they present no problem to performance or operation until they become thick enough to break away in crust-like pieces. When this happens, the propeller may be thrown out of balance and the resulting vibration could be serious. Accumulations of deposits should be removed by solvent cleaning or scraping. If the propeller has been coated, be careful not to cut through the protective covering.

## Care and Maintenance

Regular and systematic inspection of all fan parts is a necessity for good fan maintenance. A general installation and maintenance brochure (IM 100) has been supplied with this shipment. It includes fan and motor bearing lubrication, care and replacement of V-belt drives and taperlock bushing instructions.



**Aerovent**

*A Twin City Fan Company*

QBF0808

5959 Trenton Lane · Minneapolis, MN 55442-3237

Phone (763) 551-7500 · Fax (763) 551-7501 · [www.aerovent.com](http://www.aerovent.com)



MEMBER

